



Office Address

No.79-1 & 79-2, Jalan Eco Ardence D U12/36D, Eco Ardence
Seksyen U12, Shah Alam, 40170 Shah Alam, Selangor

☎ 03-5033 6036/6052

✉ info@chonglek.com

Workshop Address

Lot 4914, 6th Miles, Jalan Teratai Off Jalan
Meru, 41050 Klang, Selangor

☎ 03-3392 5495/2694

✉ info@chonglek.com

Contact Person : Mr Ivan Chong (Managing Director)



CHONG LEK

www.chonglek.com

Breakthrough Through Technology



Cert. No. AJA09/13826



Cert. No. AGM12/10009



We specialised in: ■ Steel Fabrication ■ Copper Fabrication ■ Stainless Steel Fabrication ■ Plant & Machinery Installation, Testing & Commissioning ■ All Types of Piping Works
■ Engineering, Procurement, Construction & Commissioning ■ Structural Steel Installation ■ Repair & Maintenance ■ Other Steel Works

About US

- Established in 1979, founded by late Mr Chong See Kiew
- Employs 250 Staff (Admin & Technical)

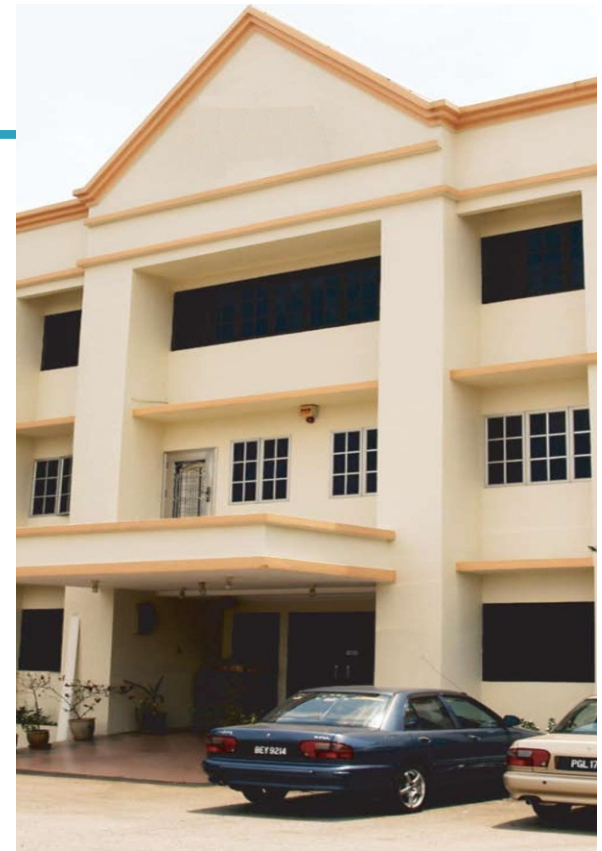
TECHNICAL CAPABILITIES

Areas of Technical Expertise

- * Miscellaneous Mechanical Equipment : Installation, Testing, Commissioning, Maintenance and Repair of mechanical based system
- * Structure Steel & Steel related works - fabrication & installation
- * Machinery parts - supply, fabricate & installation
- * Copper related works - fabricate, welding, repair

Areas of Last Experience

- * Steel related works - ducting, silos, hopper, cyclone, etc
- * Structural steel works – general steel structure, infrastructure, buildings, factory, processing plants, oil & gas, heavy industry, etc
- * Machinery parts - supply, fabricate & install, ie. conveyors, bucket & elevator, screw conveyors, dust collectors, etc
- * Copper related works - fabricate, welding, repair
- * Project Execution - EPCC, Turnkey



Area	Size
Workshop + Office	5969 m2
Under Cover Work Area	3810 m2
Open Area	762 m2
Storage Yard	1143 m2
Roofed in Area	4953 m2
Total Land Area	12140 m2

Chairman's Statement

Chong Lek Engineering Works has been experiencing rapid growth since it opened its doors in 1979. We are indeed pleased with the stronger sales and profitability performances, as it is reflective of the commitment and direction of vision that Chong Lek Engineering Works embraces.

In spite of the effects of the global economic pendulum, we managed to achieve sustained and increased growth. We are confident that Chong Lek Engineering Works will continue to grow at a positive rate. This positive and optimistic outlook is based on the strong growth in domestic as well as international demand.

We will continue to enjoy our remarkable success as we continue to strive for sustainable, capital efficient and profitable growth where we will pursue our vision. Our emphasis on innovation and breakthrough is depicted in our continuous research and development in offering first class products and services to all our customers.

WE will continue to evolve and adapt to a changing world but our basic foundation remains unchanged and reflects our commitment to meeting the accelerating and changing demands of our customers.

Our ultimate vision is to become a multi national company. We intend to expand our horizon into the international markets to serve and meet the demands and requirements of our customers from round the world. More importantly, we are looking at building long term relationship with our clients. At present, we have good business relationship with a few multi national companies abroad. This served as a foundation for Chong Lek Engineering Works towards achieving our vision in the near future.

In order to ensure that our vision will become reality, we will continue to innovate, improve and adapt along with the rapid technology advancement to provide quality products and excellent services. Our vast and valuable experience in this industry, coupled with our modern technology as well as profound reputation in the Malaysian market, our vision is just one step away.

Company History

Chong Lek Engineering Works was founded by **Mr. Chong See Kiew** in 1979. His passion to venture into the steel mill industry has led to the establishment of Chong Lek Engineering Works.

Mr. Chong See Kiew's perseverance and diligence is depicted in the success that Chong Lek Engineering Works today. He emphasizes on constant innovation through improvements in the product offerings and services. At Chong Lek Engineering Works, we recognise that our employees are our best assets. With this in mind, we constantly encourage innovation in our technology. Mr. Chong See Kiew had instilled this mindset and this has led us through numerous success and breakthroughs.

Chong Lek Engineering Works expanded its horizon by establishing **NAGASRI UNGGUL SDN BHD** IN 1996 to carry out steel structural works of boiler and steel cooling system.

In 1997, Chong Lek Engineering Works started its overseas market business, particularly Germany in which Chong Lek Engineering Works has been supplying materials, steel and copper fabrication to the major projects undertaken by the Germany customers; and this is the result of excellent track record of providing world class products and services in Malaysia since then. This leads to satisfaction shown in Chong Lek Engineering Works products. Chong Lek Engineering Works deals with all business dealings with the highest degree of integrity. Trust and long term business relationship are therefore fostered to ensure the continuous success will be experienced by Chong Lek Engineering Works and all customers.

In the same year, MG Amalgamation Sdn Bhd was established to construct boiler steel cooling system to accommodate to their increasing demand in our products and services.

Throughout the years, we have built up a strong reputation for high quality products and services. Megasteel Sdn Bhd, Amsteel Mills Sdn Bhd, Southern Steel Bhd and Ann Joo Integrated Steel Sdn Bhd are our customers just to name a few where we undertook major projects. These projects executed ranges from simple decks and platforms to more complex upgrading system projects.

Our Mission

“Breakthrough through Technology”

The dynamism and resilience of the Chong Lek Engineering Works paved the way for continuous development and innovation.

As such, we endeavour “**Breakthrough through Technology**” in every aspect.

“Innovation”

Fast pace advancement of technology has led us to be constantly innovative in our products and services. We constantly innovate in order to keep abreast with the latest technology and to ensure that all our customers’ needs and demands are met at all times.

“Customer-Focused”

We strive to deliver the best products, services and support align with our commitment to be a customer-oriented organisation.

“Integrity”

We conduct business with the highest degree of integrity. At Chong Lek, we look towards sustaining long-term relationship for continuous advancement and success.

Technology

When it comes to technology,

Chong Lek Engineering Works Sdn Bhd goes for the best. There is absolutely no room for compromise in this area. Our remarkable success today is a result of stronger synergies, improved efficiencies, new and improved products and consistent marketing efforts all directed at satisfying our customers.

Chong Lek Engineering Works Sdn Bhd recognises the added value impact of technology to its business competitiveness and sustained growth. We integrate and collaborate the latest technology manufacturing of our final products.

Quality, excellence is depicted in our final products. We exercise quality control in manufacture because we only believe in delivering the best to our customers. We manifest this recognition through our commitment to technology development and investment in infrastructure, projects and employee development.

We Specialised in :-

1) All kind of steel structural/related works

- Parts fabrication
- Machinery/Parts installation
- Maintenance & Repairs

2) Piping Works

- Fabrication till testing
- Commissioning & Plant Erection

3) Copper Related Works

- Fabrication
- Repair
- Site Welding, etc

4) Design & Build

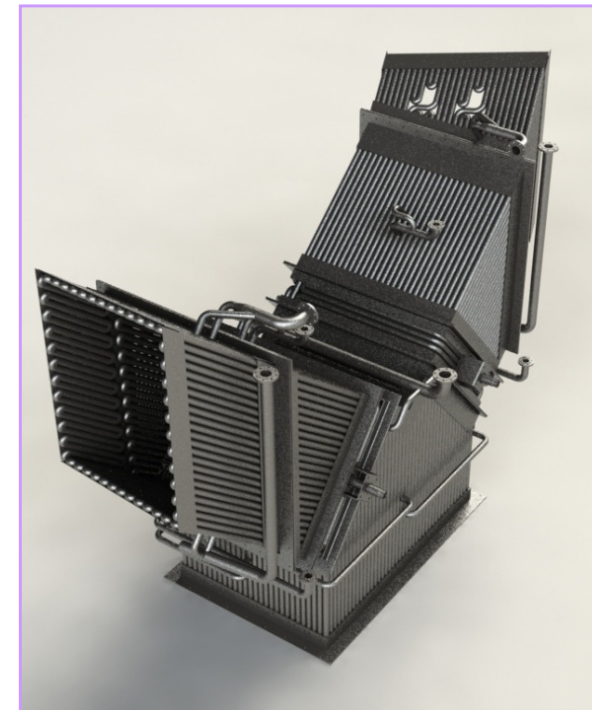
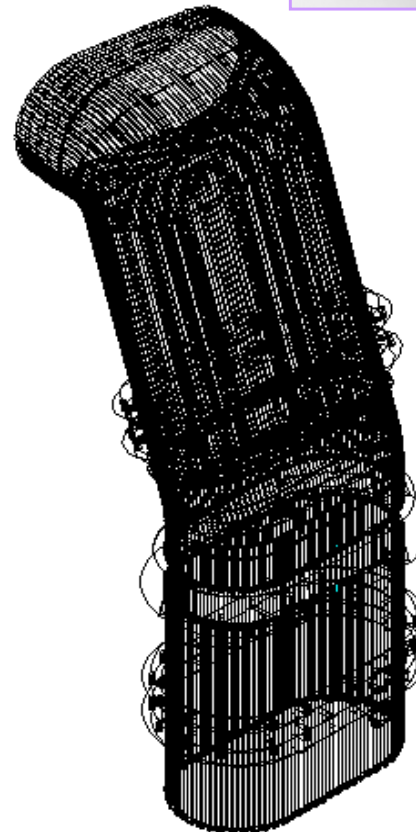
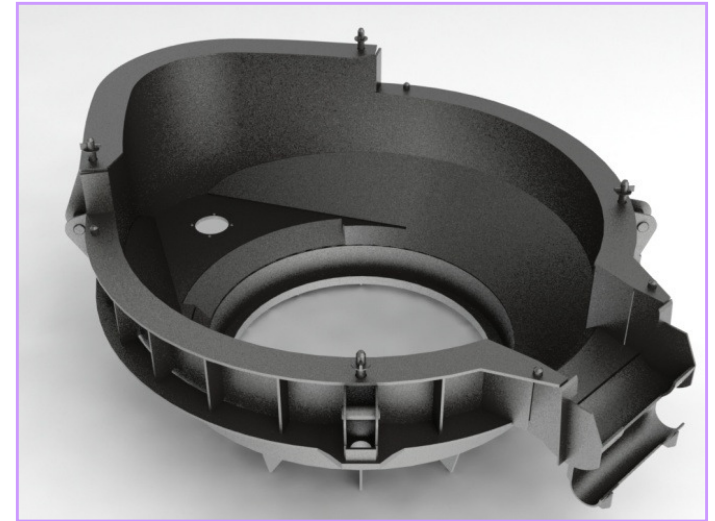
- Value Engineering
- 2D Modeling (AutoCAD 2010)
- 3D Modeling (Solid Works 2009)

5) Project Execution

- Fabrication
- Installation
- Testing & Commissioning

6) Civil Works (Associate Partner)

- Piling
- Concrete Structure
- Architectural Works



Our Products & Services:-

✧ **Electric Arc Furnace**

- * **Furnace cooling system (steel & copper)**
- * **Water cooled duct/fixed duct**
- * **Water cooled panel**
- * **Water cooled upper shell**
- * **Bottom shell**
- * **Water cooled roof**
- * **Electric Arc Furnace Upgrading**

✧ **Air duct**

✧ **Copper cooling panel**

✧ **Copper injector box**

✧ **Copper Oxygen lance**

✧ **Dust collector system – bag house, trombone cooler**

✧ **Ladle transfer car**

✧ **Ladle**

✧ **Tundish**

✧ **Structural Steel Works**

- * **Overhead Conveyor Gantry**
- * **Link Bridge**
- * **Bus Rapid Transit – Steel Structural for Station**

✧ **Scrap Cleaning Machine**

✧ **Soaking Furnace Upgrading**

✧ **Combustion Chamber**

✧ **Raw Material Yard Stacker**

Reclaimer & Blending

Stacker - installation

✧ **Raw Material Conveyor**

System & Transfer Station

✧ **Direct Reduction Iron Plant**

✧ **Stainless Steel Bin**

(Flour Mill)

✧ **Gas Turbine Silencer**

Our Products & Services:-

✧ Lime Processing Plant

- * Lime Kiln
- * Waste Gas & Lime Dust Filter System (Design & Build)
- * Lime Silo
- * Lime Stone Bunker
- * Coal Dust Silo
- * Hydration Plant

✧ Main Process Building, Pipe Rack, Warehouse

✧ Slag Processing Plant – Equipment/Machinery Installation

✧ Crane Girder

✧ Steel Water Tank – 200m³, 3000m³ & 5000m³

✧ Silo

✧ Natural Gas Pipeline

✧ Piping Works – Rolling Mill BGV Upgrading

✧ Heat Exchanger

✧ Hopper & chute c/w abrasive resistance liner plate

✧ Pressure Vessel

✧ Enclosed Ground Flare

✧ Knock Out Drum

✧ Skid

✧ Vent Stack

✧ Stair Tower

✧ Vapour Recovery Unit

✧ Oil & Gas Related


✧ Stone Column (civil works)

✧ Trading Business

- * Hydraulic & Lubrication Oil Filter Elements
- * Filter Bags for Fume Extraction Baghouse System
- * Cooling Tower for Water Cooling System
- * Thermal Shaft c/w Paddles for Lime Plant
- * Rolling Mills Fast Block Roll Shafts Repairing
- * Rolling Mill Stand Locking Ring Body Modification
- * Rolling Mill Locking Ring Complete Set
- * Casting of Mechanical Parts

Our Products & Services:-

- **Industrial Mechanical Parts Supplies**

- a) Hydraulic and Lubrication Oil Filter Elements
 - b) Filter Bags for Fume Extraction Baghouse System
 - c) Cooling Tower for Water Cooling System
 - d) Thermal Shaft C/W Paddles for Lime Plant
 - e) Rolling Mill's Fast Block Roll Shafts Repairing
 - f) Rolling Mill Stand Locking Ring Body Modification
 - g) Rolling Mill Locking Ring Complete Set
 - h) Casting of Mechanical Parts
 - i) Gear unit, Flange, Bush for Wire Rod Block Primary Gearbox
 - j) Screw for ESS Locking Ring Units
 - k) Flange for BGV200
 - l) Ring in Two Halves
 - m) Coil Compactor Wire Inlet Guide
 - n) Coil Compactor Guide Body
 - o) Coil to C-Hook Transfer Racks
 - p) Tail EVAC Hydraulic Cylinders
- 

Equipment List (Owned):-

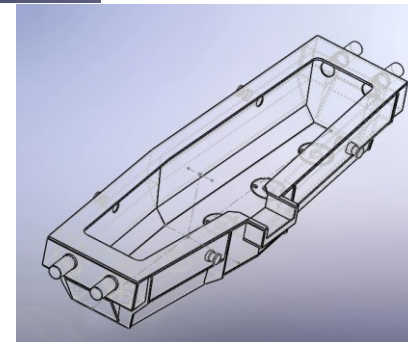
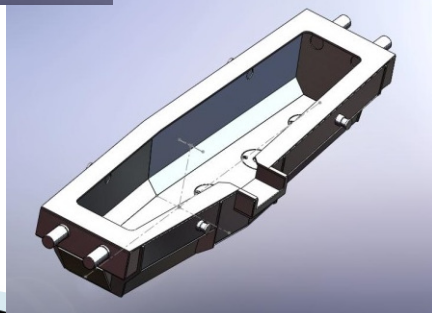
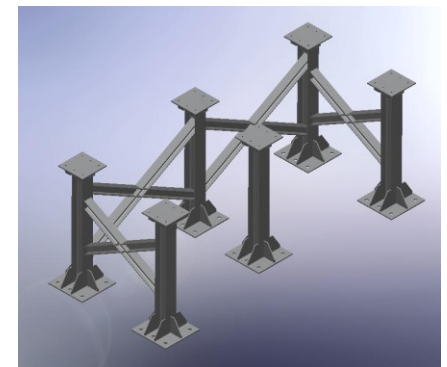
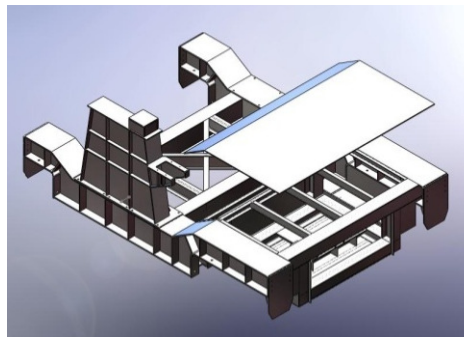
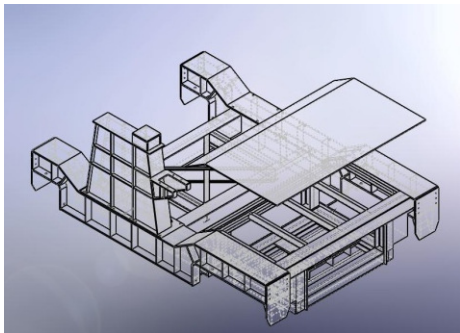
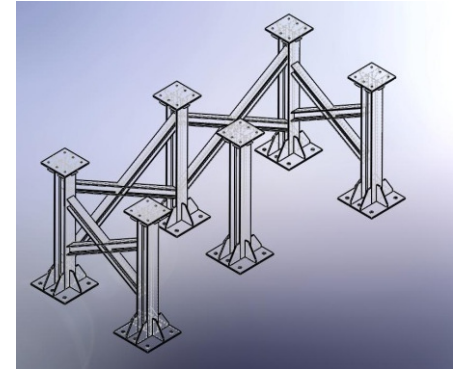
No	Equiment/Machine	Capacity	Quantity
1	Air Compressor	20hp	1
2	CNC Beam Drilling Machine	Up to 1250x500mm H-Beam Drilling Dia:10mm~40mm	1
3	New CNC Plasma Cutting Machine	Up to 80mm from edge -Mild steel Up to 75mm from edge -Stainless Steel	1
4	Plasma Cutting Machine	Up to 20mm Copper Plate	2
5	Bevelling Machine		
	- Bevelling Machine	2" - 3" Pipe	2
	- Plate Chamfering Machine	15 - 45 degree	1
6	Bandsaw Machine	Up to 10" Pipe 1200mm @90deg cut 530mm @60deg cut	1 3
7	Copper Welding		
	- TIG Machine & Cooler Machine	350 ~ 500 Amp	13
	- Flux Core	500 Amp	1
	- SMAW (electrode) Machine	500 Amp	3
8	Arc Welding Machine	500 Amp	40
9	Stud Welding	Up to 8mm Stud	1
10	Auto Welding Machine	-	6
11	MAG/MIG Welding Machine	500 Amp	21
12	Hydraulic Plate Rolling Machine	M/S 3mm ~ 28mmt	3
13	Hydraulic Pipe Rolling Machine	2" - 8" Pipe	3
14	Optical Cutting Machine (SAF Model 1503)	M/S - 1 meter (w) x 6m	2
15	Auto Gas Cutting Machine	Up to 50mmt M/S Plate	13

Equipment List (Owned):-

No	Equiment/Machine	Capacity	Quantity
16	Electric Wire Rope Winch	2-5ton	1
17	Magnetic Drill	Ø 12mm - 90mm	16
18	Hydraulic Jack	5 ~ 100 Ton	10
19	Shearing Machine	M/S ~ up to 16mmt	1
20	Hydraulic Press Machine	100 Ton	3
21	Iron Worker	100 Ton	1
22	Lathe Machine	6 meter length	1
23	Punching Machine	Ø up to 20mm Thickness up to 19mm	4
24	Gear Jack	35/50 ton	6
25	Submerge Arc	1000 Amp	2
26	Hand Pipe Cutter	Dia 100-500mm	1
27	Drilling Machine	12 Amp-55 Amp	3
28	Baking/Electrode Oven	70kg/500 Celcius	2
29	Generator Set	1000 Amp	2
30	Mobile Crane	20 Ton 35 Ton	1 1
31	Overhead Crane	3.2 Ton ~ 15 Ton	5
32	Low Loader / BQQ140 low loader	Volvo FL-7/Sinotruk/A7	2
33	Backhoe Loader	Case 580/K1 K2	1
34	Forklift	3 Ton 4 Ton 5 Ton	2 1 1
35	Lorry	3 Ton 7 Ton	1 1

Key Notes Personnel :-

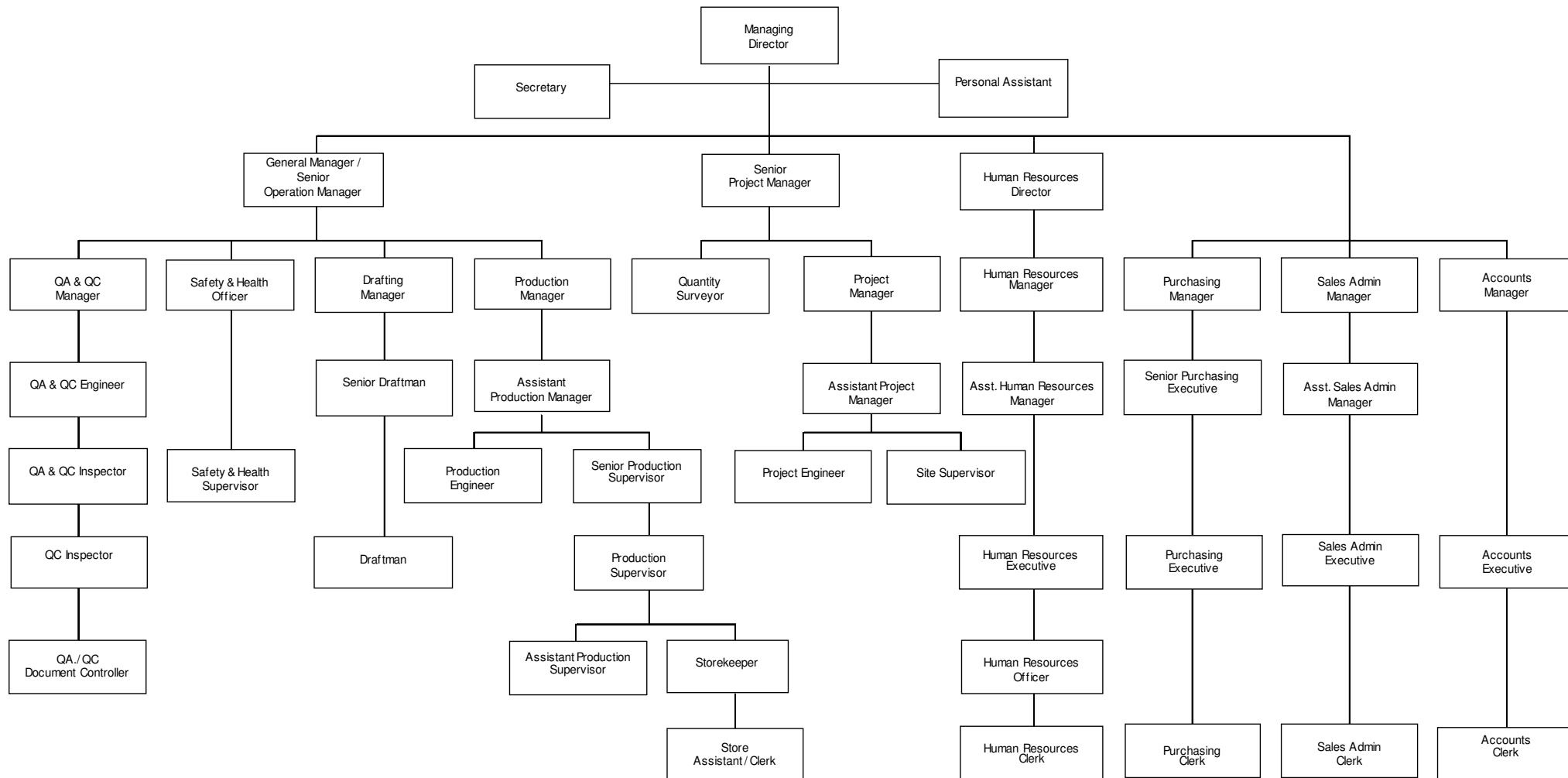
- **Experienced factory manager / supervisors/ engineers / technicians with more than 30 years in Steel Cooling System Structure & Steel Structural Works**
- **Qualified Welders, Fitters, Quantity Surveyors, competent design engineer**
- **Efficient office administrative supports**



Key Notes Personnel :-

CHONG LEK ENGINEERING WORKS SDN BHD

ORGANISATION CHART



Certification & Awards

❖ Patent

- Double Layer Cooling Panel for Arc Furnace – MY-174383-A

❖ Certification

- ISO 9001:2015 Certified
- Grade 7 in category B (B18, B04), CE (CE24, CE21) & ME (M15) registered under Malaysia's CIDB and CIDB Sijil Perolehan Kerja Kerajaan
- Grade 7 in Kejuruteraan Am & Kejuruteraan Mekanikal under Felda Global Ventures Holdings Bhd
- Pressure Vessel & Power Boiler Manufacturer & Metallic Repairer Licence
- JKKP, ASME – U Stamp, National Board – R & NB Stamp

❖ Awards

- Winner of The 6th Malaysia's 100 Outstanding SMEs - Golden Bull Award 2008
 - Winner of The 7th Asia Pacific International Honesty Enterprise – Keris Award 2008
 - Winner of The Asia Pacific Entrepreneurship Awards 2010
~ Most Promising Entrepreneurship Awards 2010
 - SME Competitiveness Rating For Enhancement & CIDB (SCORE) – 3 Stars Awarded
 - Winner of The 10th Malaysia's 100 Outstanding SMEs - Golden Bull Award 2012
 - Winner of The 11th SME Recognition Award – Rising Star Award 2012
 - Winner of The Malaysia 100 Excellent Enterprises 2013 – Golden Eagle Award 2013
 - Top 30 finalist of Ten Outstanding Young Malaysian Awards 2013
 - Winner of The 12th SME Recognition Award – SME Young Entrepreneur Award 2013
 - Winner of The Sin Chew Business Excellence Awards 2014- Product & Service Excellence Award
 - Winner of The Sin Chew Business Excellence Awards 2015- Product & Service Excellence Award
 - Winner of The Malaysia 100 Excellent Enterprises 2015 – Golden Eagle Award 2015
 - Winner of Platinum Business Awards 2016 – SME Young Entrepreneur Award
 - Winner of The Asia Pacific Enterprise Awards 2020~ Fast Enterprise Category
- 

Certification & Awards



SIJIL PEROLEHAN KERJA KERAJAAN

Adalah disahkan syarikat/Firma ini adalah berdaftar dengan Lembaga Pembangunan Industri Pembinaan Malaysia dan tertakluk kepada syarat-syarat termaktub bersama sijil ini.

No. Pendaftaran : 0120060207-SL107960
Nama Kontraktor : CHONG LEK ENGINEERING WORKS SDN. BHD.
Alamat Berdaftar : NO 19A, LEBUH BANGAU TAMAN BERKELEY
41150 KLANG
SELANGOR
Daerah : KLANG
Tarikh Mula Berdaftar : 07/02/2006

<u>GRED</u>	<u>KATEGORI</u>	
G7	B	(Pembinaan Bangunan)
G7	CE	(Pembinaan Kejuruteraan Awam)
G7	ME	(Mekanikal dan Elektrikal)

PEGAWAI SYARIKAT YANG DITAUJAHKAN

NURZAFIRAH BINTI MISKON

NO. K/P

861213295514

Tarikh Mula Berkuatkuasa : 31/08/2024
Tarikh Habis Tempoh Perakuan : 18/09/2027

Ketua Eksekutif
Lembaga Pembangunan Industri Pembinaan Malaysia
Tarikh: 31/08/2024



PERAKUAN PENDAFTARAN

Adalah dengan ini diperakui bahawa kontraktor yang dinyatakan di bawah ini telah berdaftar dengan Lembaga mengikut Bahagian VI Akta Lembaga Pembangunan Industri Pembinaan Malaysia 1994. Pendaftaran ini adalah tertakluk kepada syarat-syarat yang telah ditetapkan bersama perakuan ini.

No. Pendaftaran : 0120060207-SL107960
Nama Kontraktor : CHONG LEK ENGINEERING WORKS SDN. BHD.
Alamat Berdaftar : NO 19A, LEBUH BANGAU TAMAN BERKELEY
41150 KLANG
SELANGOR
Daerah : KLANG
Tarikh Mula Berdaftar : 07/02/2006

<u>GRED</u>	<u>KATEGORI</u>	<u>PENGGHUSUSAN</u>
G7	B	B04 B18
G7	CE	CE21 CE24
G7	ME	M15

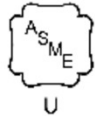
Tarikh Mula Berkuatkuasa : 30/08/2024
Tarikh Habis Tempoh Perakuan : 18/09/2027
STATUS: AKTIF

Ketua Eksekutif
Lembaga Pembangunan Industri Pembinaan Malaysia
Tarikh: 30/08/2024



Certification & Awards

The American Society of Mechanical Engineers



CERTIFICATE OF AUTHORIZATION

The named company is authorized by the American Society of Mechanical Engineers (ASME) for the scope of activity shown below in accordance with the applicable rules of the ASME Boiler and Pressure Vessel Code. The use of the ASME Certification Mark and the authority granted by this Certificate of Authorization are subject to the provisions of the agreement set forth in the application. Any construction stamped with the ASME Certification Mark shall have been built strictly in accordance with the provisions of the ASME Boiler and Pressure Vessel Code.

COMPANY:

Chong Lek Engineering Works Sdn Bhd
Lot 4914, 6th Miles
Jalan Teratai Off Jalan Meru
Klang, Selangor 41050
Malaysia

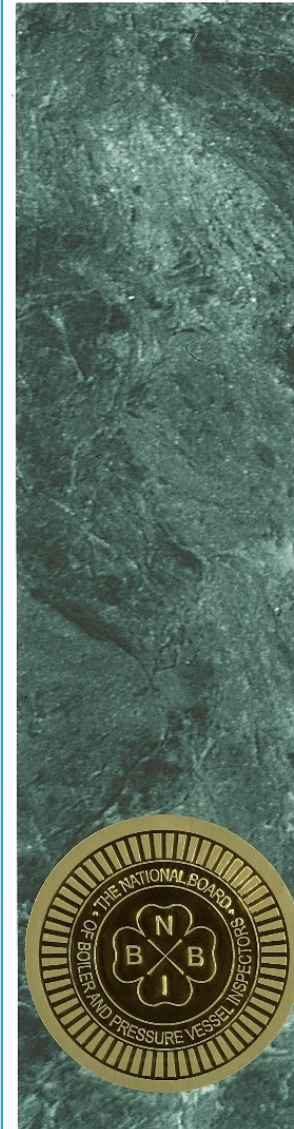
SCOPE:

Manufacture of pressure vessels at the above location and field sites controlled by the above location (This authorization does not cover impregnated graphite)

AUTHORIZED: December 8, 2020
EXPIRES: December 8, 2023
CERTIFICATE NUMBER: 48863

Board Chair, Conformity Assessment

Managing Director, Conformity Assessment



THE NATIONAL BOARD OF BOILER & PRESSURE VESSEL INSPECTORS

Certificate of Authorization



This is to certify that

Chong Lek Engineering Works Sdn Bhd
Lot 4914, 6th Miles
Jalan Teratai Off Jalan Meru
Klang, Selangor 41050
Malaysia

is authorized to use the R Symbol in accordance with the provisions of the National Board Inspection Code and NB-415, Accreditation of "R" Repair Organizations.

All activities within the scope of this Authorization shall be controlled by the above location.

The scope of this Authorization is limited to:

Metallic
Repairs and Alterations
At
Shop and Field Locations

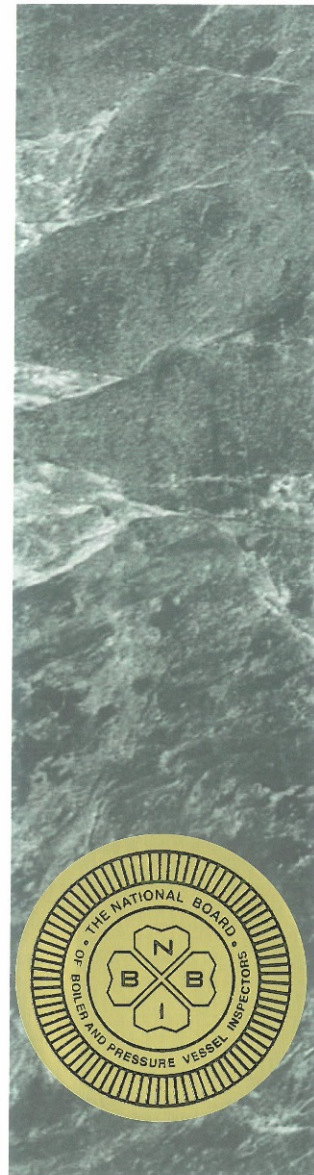
Certification Number: 10931

Issue Date: July 26, 2018

Expiration Date: July 25, 2021

Executive Director

Certification & Awards



THE NATIONAL BOARD
OF
BOILER & PRESSURE VESSEL INSPECTORS

***Certificate of Authorization
to Register***



This is to certify that

**Chong Lek Engineering Works Sdn Bhd
Lot 4914, 6th Miles
Jalan Teratai Off Jalan Meru
Klang, Selangor 41050
Malaysia**

*is authorized to apply the "NB" mark and register boilers,
pressure vessels or other pressure retaining items with the
National Board.*

*The scope of Authorization is limited to items
manufactured in accordance with:*

ASME Designator(s): U

Issue Date: March 10, 2022

*This Certificate of Authorization to Register will remain
in effect as long as the manufacturing organization holds
a valid Certificate of Authorization issued by the
American Society of Mechanical Engineers.*

Executive Director

Certification & Awards



CERTIFICATE

BQC CERTIFICATION BODY CERTIFIES THAT THE ORGANIZATION

Chong Lek Engineering Works Sdn. Bhd.

Office: 79-1 & 79-2, Jalan Eco Ardence D U12/36D, Eco Ardence, Seksyen U12, 40170 Shah Alam, Selangor Darul Ehsan, Malaysia.
Factory: Lot 4914, 6th Mile, Jalan Teratai Off Jalan Meru, 40150 Klang, Selangor Darul Ehsan, Malaysia.

WITH SCOPE OF CERTIFICATION

Metal Fabrication, Installation, Commissioning, Repair, Maintenance & Related Mechanical Engineering Works For Industrial Use.

Has developed and implements a quality management system that fully meets the requirements of

ISO 9001:2015

Certification audit: 30/7/2024 1st surveillance audit: ___/___/___ 2nd surveillance audit: ___/___/___

The audit reports dates above are filled in annually after the successful completion of the surveillance audits and attest the continuous conformity of the certified organization to the above standard and the validation of the certification for each designated period.

Certificate Number: 100CN24552WW4584

Initial Certification	23/08/2024	Certification cycle start	23/08/2024
(Re)issue	23/08/2024	Certification cycle expiry	22/08/2027

If the surveillance audits are not conducted annually, the certification of the Organization will be withdrawn and the certificate has to be returned, since it remains a property of BQC.

ACCREDITATION
MARKS



CERTIFICATION
DEPARTMENT

Niki Panopoulou

Niki Panopoulou

BQC CERTIFICATION

BQC P.C. | Certification Body | S.A. Ag. Dimitrios, Athens | T: +30 211 233726 info@bqc.gr | www.bqc.gr



MALAYSIA

CERTIFICATE OF GRANT OF A PATENT

In accordance with Section 31 (2) of the Patents Act 1983 a patent for an invention having grant number MY-174383-A has been granted to CHONG LEK ENGINEERING WORKS SDN BHD, in respect of an invention having the following particulars:

TITLE	: DOUBLE LAYER COOLING PANEL FOR ARC FURNACE
FILING DATE	: 24 JULY 2009
PRIORITY DATE	: NONE
NAME OF INVENTOR	: CHOO WAH ANN
PATENT OWNER	: CHONG LEK ENGINEERING WORKS SDN BHD LOT 4914, 6TH MILES JALAN TERATAI OFF, JALAN MERU 41050 KLANG SELANGOR MALAYSIA
DATE OF GRANT	: 15 APRIL 2020
DURATION OF PATENT	: 24 JULY 2009 UNTIL 24 JULY 2029
END OF PROTECTION	: 14 APRIL 2021 (SUBSEQUENT ANNUAL FEE SHALL FOLLOW AS STATED IN THE SCHEDULE OF FEES AT THE BACK OF THIS PAGE)

Dated this 15 day of APRIL 2020

(ZULKARNAIN MUHAMMAD)
Deputy Registrar of Patents
MALAYSIA

Certification & Awards



JABATAN KESELAMATAN DAN KESIHATAN PEKERJAAN MALAYSIA
(Kementerian Sumber Manusia)
Department Of Occupational Safety & Health
(Ministry Of Human Resources)
Ara 2, 3 & 4, Block D3, Kompleks D
Pusat Pentadbiran Kerajaan Persekutuan
62530 W.P. Putrajaya

Tel. : 03 - 88865343
Fax : 03 - 88892443
Web : http://dosh.gov.my
Email : jkkp@mohr.gov.my



Ruj. Tuan :
Ruj. Kami : JKKP IS 127/682/1-608
Tarikh : 3 Mac 2015

Pengurus,
CHONG LEK ENGINEERING WORKS SDN BHD
No. 16, Jalan Setia Tropika U13/20B,
Setia Eco Park, Seksyen U13,
40170 Shah Alam,
Selangor

Tuan,

Kelulusan Pembaharuan Pendaftaran Sebagai Syarikat Pembuat dan Pembaik pulih

No. Pendaftaran : BT 21 / 608
Tempoh Kelulusan : 27 Februari 2015 hingga 27 Februari 2018

Adalah saya dengan hormatnya merujuk kepada permohonan tuan berhubung dengan perkara di atas.

2. Sukacita dimaklumkan bahawa Jabatan ini meluluskan permohonan pendaftaran syarikat tuan sebagai syarikat pembuat dan pembaik pulih pengandung tekanan tak berapi bagi skop berikut -

- i) PVM01 - Pembuat Pengandung Tekanan Tak Berapi
- ii) PVR01 - Pembaik pulih Pengandung Tekanan Tak Berapi

3. Kelulusan pembaharuan pendaftaran ini adalah tertakluk kepada syarat-syarat seperti di bawah :-

- i. Jabatan ini hendaklah diberitahu sekiranya ada sebarang pertukaran / tambahan / pemindahan pada pegawai, jentera dan premis yang sedia ada. Jabatan ini boleh membatalkan pendaftaran ini jika pihak tuan gagal memaklumkan dengan segera.
- ii. Sebelum kerja-kerja pembuatan pengandung tekanan tak berapi boleh dijalankan, pihak tuan hendaklah mendapatkan kelulusan rekabentuk dari Jabatan ini terlebih dahulu.
- iii. Segala prosedur kerja-kerja pembuatan dan pembaik pulih pengandung tekanan berapi dan mestilah mengikut apa yang dinyatakan di dalam 'Quality Control Manual' yang telah disemak dan diterima oleh Jabatan ini dan sebarang perubahan yang akan dilakukan pada 'Quality Control Manual' mestilah mendapat kelulusan dari Jabatan ini.
- iv. Semua kerja-kerja kimpalan hendaklah dibuat oleh pengimpal syarikat tuan mengikut Spesifikasi Tatacara Kimpalan (Welding Procedure Specification) yang diluluskan oleh Badankuasa Memeriksa yang diiktiraf oleh Jabatan ini. Semua kerja-kerja kimpalan juga perlu dijalankan di bawah penyeliaan dan kawalan yang rapi oleh pihak kawalan mutu tuan sendiri dan semua rekod-rekod kimpalan mestilah disimpan dengan baik.

arm/fjk/upv/r/BT21_608

1/2

(Sila nyatakan rujukan fail apabila menjawab surat ini)

v. Pihak tuan dikehendaki mengambil perhatian terhadap rekod kerja setiap projek yang dijalankan. Antaranya termasuk :-

- a. Rekod Spesifikasi Tatacara Kimpalan (WPS);
- b. Rekod Ujian Kelayakan Pengimpal (WQT);
- c. Rekod Ujian Hidrostatik (JKJ 127);
- d. Rekod Kimpalan Ke Atas Pengandung Tekanan Tak Berapi dan (Kej. 175A);
- e. Rekod Pengurusan Keselamatan.

Semua rekod kerja perlu disimpan dengan sempurna untuk semakan Jabatan ini dari semasa ke semasa. Rekod-rekod ini juga akan disemak semasa membuat permohonan pembaharuan pendaftaran pada masa akan datang.

vi. Semua kerja - kerja pembuatan dan pembaik pulih pengandung tekanan berapi hendaklah dibuat di premis yang beralamat seperti di bawah -

Lot 4916, Batu 6, Jalan Teratai, Off Jalan Meru, 41050 Klang, Selangor

atau di tempat pemilik pengandung tekanan tak berapi tersebut dipasang.

vii. Adalah diingatkan bahawa kerja-kerja pembuatan dan pembaik pulih pengandung tekanan tak berapi di premis baru hendaklah mendapat kebenaran daripada Jabatan ini terlebih dahulu.

viii. Pihak tuan mestilah mematuhi semua kehendak Akta Kilang dan Jentera 1967, Akta Keselamatan dan Kesihatan Pekerjaan 1994 dan Peraturan-Peraturan yang dikuatkuasakan dari masa ke semasa.

4. Pihak tuan dikehendaki melakukan kerja-kerja pembuatan pengandung tekanan tak berapi pertama (Demo Vessel) dalam masa enam (6) bulan dari tarikh surat ini. Pembuatan pengandung tekanan tak berapi tersebut hendaklah dikawal selia oleh Pegawai Keselamatan dan Kesihatan Pekerjaan, Ibu Pejabat.

5. Pihak tuan hendaklah memohon pembaharuan pendaftaran dengan Jabatan ini sekurang - kurangnya tiga (3) bulan sebelum tarikh tamat tempoh kelulusan.

6. Perlu diingatkan bahawa kebenaran ini boleh ditarik balik pada bila-bila masa sekiranya syarat-syarat di atas dan lain-lain syarat Jabatan ini tidak dipenuhi.

7. Sekiranya pihak tuan bersetuju untuk mematuhi syarat-syarat di atas, sila maklumkan ke Jabatan ini secara bertulis dalam masa empat belas (14) hari dari tarikh surat ini dikeluarkan.

Sekian, terima kasih.

'BERKHIDMAT UNTUK NEGARA'

Saya yang memerintah


(Ir. IBRAHIM BIN MD. DOL)

b/p Ketua Pengarah,
Jabatan Keselamatan dan Kesihatan Pekerjaan,
Malaysia.

s.k : 1. Pengarah, Jabatan Keselamatan dan Kesihatan Pekerjaan Negeri
2. Ketua Seksyen Rekabentuk, Bahagian Keselamatan Industri

arm/fjk/upv/r/BT21_608

2/2

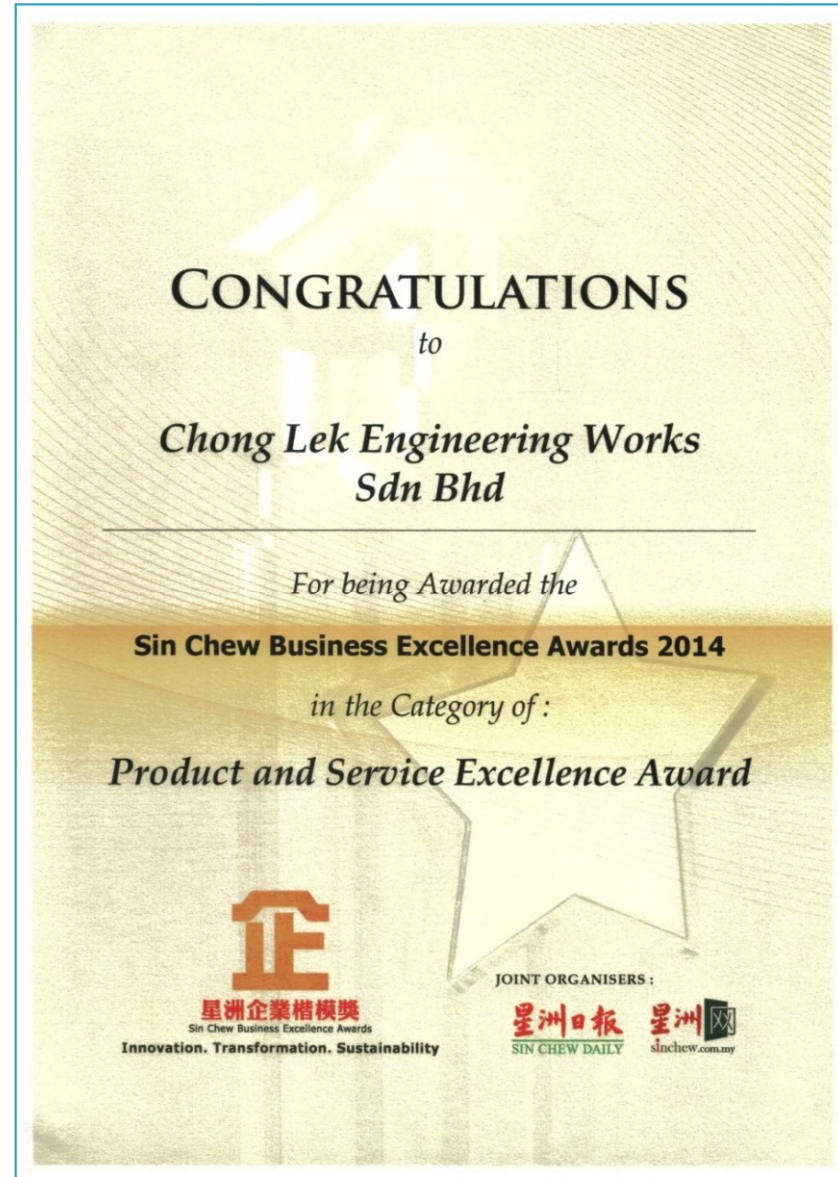
Certification & Awards



Certification & Awards



Certification & Awards



Certification & Awards



Certification & Awards



Certification & Awards



Certification & Awards



Certification & Awards



Certificate of Achievement

This is to Certify that

CHONG LEK ENGINEERING WORKS SDN. BHD.

0120060207-SL107960

Grade Registered : G7

has been evaluated according to the SCORE criterias set by the Board and
has achieved the rating of



(3 Star)

for the year
2020

(Valid until 10/06/2022)

Good management and technical capabilities, compliance to best practices and good project management.

Ketua Eksekutif
Lembaga Pembangunan Industri Pembinaan Malaysia
11/06/2020



SC042676



Certificate of Achievement

This is to certify that

CHONG LEK ENGINEERING WORKS SDN. BHD.

(0120060207-SL107960)
Grade Registered : G7

have been evaluated according to the SCORE criterias set by the Board and
has achieved the rating of



(3 Star)

for the year
2012

MOHD NAZLI BIN AHMAD MAHYADIN
GENERAL MANAGER
CIDB MALAYSIA

Date : 15 OCT 2012



04023

Certification & Awards



FGV HOLDINGS BERHAD 800165-P
(Formerly known as Felda Global Ventures Holdings Berhad)

VENDOR REGISTRATION DECLARATION

REGISTRATION REFERENCE NO. : NB-01121300126-01
VALIDITY PERIOD : 03/05/2023 - 03/05/2026

It is hereby acknowledged that the vendors set out below have been registered with FGV HOLDINGS BERHAD and are eligible to participate in quotation / tender offers at FGV Group Companies.

NAME AND REGISTERED ADDRESS

CHONG LEK ENGINEERING WORKS SDN. BHD. (Company No. : 602149-A)
NO 19A, LEBUH BANGAU TAMAN
BERKELEY

CATEGORY CODE IS AS FOLLOW :

CATEGORY CODE	DESCRIPTION	GRADE
01 - Kejuruteraan	02 - Kejuruteraan Mekanikal	G7
01 - Kejuruteraan	01 - Kejuruteraan Awam	

Important:
Application for renewal of certificate shall be made at least 30 days before the expiry date of the certificate.

CERTIFICATE

Issued Date: 03/05/2023

Testimonial

**SMS
MEER**

SMS group

SMS Meer Engineering (China) Ltd
No. 2200, Lianhua Road South
Minhang District
Shanghai 201108
China

Phone +86 21 24086543 Fax +86 21 24086558

September 18, 2012

To Whom It May Concern:

Re: **Chong Lek Engineering Works**

Over the period, 2 July to 16 September 2012, SMS MEER revamped the High Speed Rolling Mill at AMSteel, Banting plant,

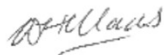
During this period all the pipe work was replaced and structural work had to be modified.

The work was done in a very professional and courteous manner. I would like to highlight the dedication, precession, efficiency, tidiness and enthusiasm of the team.

I have installed Rolling Mills in many countries and I would rank this company as one of the very best.

I can highly recommend this company to others in need of there service.

Sincerely,



Willem Maas
General Manager Int'l Projects

MALAYAN FLOUR MILLS BERHAD (4250-M)

HEAD OFFICE : 22ND FLOOR, WISMA MCA, 193, JALAN AMPANG, 50450 KUALA LUMPUR, P.O. BOX 10537, 50716 KUALA LUMPUR, MALAYSIA.
MILL : JALAN DAVID BUNGS, BATU LINDAH, 32200 LUMUT, PERAK DARUL RIDZUAN, MALAYSIA.

HEAD OFFICE CABLES
FLOURMILL : KUALA LUMPUR
TELEPHONE
603-21700889
FAX
603-21700888

MILL CABLES
FLOURMILL LUMUT
TELEPHONE
605-6778221, 6778222
FAX
605-6778206

Date: 27 May 2013

Chong Lek Engineering Works Sdn. Bhd.
Lot 4914, 6th Miles.
Jalan Teratai off Jalan Meru,
41050 Klang
Selangor D.E.

(Attn: Mr. Ivan Chong Fu Seong)

Dear Sir,

Re: **CHONG LK ENGINEERING WORKS SDN. BHD.**

We had awarded total nos. of nine (9) steel bins for our Lumut plant and total nos. of thirteen (13) steel bins for our Pasir Gudang plant to the above mentioned contractor; for supply, fabricate delivery, paint, and installation.

The steel bins are made of mild steel and stainless steel, and to contain flour in generally. Mild steel bins are sand blasted and painted internally with food grade painting, external with protective painting; stainless steel bins are pickled and cleaned.

For the scope of works provided by the contractor, it was done in a very professional and courteous manner. I would like to highlight the dedication, efficiency and enthusiasm of the company.

I highly recommend this company to others in needs of their service.

Thank you.

Yours faithfully
MALAYAN FLOUR MILLS BERHAD


DAVID SOO HONG KEONG
Senior Project Manager

Testimonial



AMSTEEL MILLS SDN BHD (55077-A)

A Member of The Lion Group

7th January 2012

To Whom It May Concern:

Re: Chong Lek Engineering Works

From 2nd of July 2012 to 16th September 2012, Amsteel Mills Sdn Bhd (Banting Operation) has performed Upgrading Project for the High Speed Wire Rod Block.

The original piping were removed and replaced with new piping inclusive of piping for cooling water, lubrication and hydraulic oil, and compressed air.

Throughout the project, they have shown great professionalism and performing the job without any flaw. I would emphasize on the quality, tidiness, accuracy and enthusiasms of their team.

In addition, they performed their work ahead of schedule which leads to other contractor to complete their work faster as well.

I would recommend this company to other should there any demand for their service.

Regards,


Mohd Azlan
Technical Project Manager,
WRB Upgrading Project
Amsteel Banting


Lim Aik Peng
A. General Manager,
Amsteel Banting

*****WITHOUT PREJUDICE*****

Lot 2320 & 2323B, Kawasan Perindustrian Olak Lampit, Mukim Tanjung Dua Belas, 42700 Banting, Selangor Darul Ehsan.
Tel: 03-31812195/31802235/31802237 Fax: 05-31870630



Date: 21 May 2014

Ref: SWC/J180-2369-00/02.03.39/L/0007

Chong Lek Engineering Works Sdn Bhd

Lot 4914, 6th Miles
Jalan Teratai off Jalan Meru
41050 Klang
Selangor Darul Ehsan

Tel: +603 3392 4978
Fax: +603 3392 8496

Attn: Ivan Chong Fu Seong

Dear Sir,

CADANGAN PEMBANGUNAN 1 BLOK MENARA PEJABAT 24 TINGKAT DI ATAS SEBAHAGIAN LOT 42, JALAN PJS 11/15, BANDAR SUNWAY, MUKIM DAMANSARA, DAERAH PETALING, SELANGOR DARUL EHSAN, UNTUK TETUAN SUNWAY PINNACLE SDN BHD
Re: CHONG LEK ENGINEERING WORKS - Structural Steel Works (Link Bridge)

We had awarded the steel works for the link bridge connecting Menara Sunway and the Pinnacle Sunway to the above mentioned contractor for supply, delivery, galvanizing and installation.

The steel members were delivered in hot-dipped galvanized form. Sections were pre-welded in the factory before delivering to site for speed of installation on site.

For the scope of works provided by the contractor, it was done in a professional and courteous manner. Staff assigned to the project were dedicated and proactive in solving the matter on hand.

We would recommend this company to other Sunway projects.

Thank you.

Yours faithfully,
SUNWAY CONSTRUCTION SDN. BHD.


Yip Wei Len
Assistant Director - Technical

Chong Lek Engineering Works Sdn Bhd - Ivan Chong Fu Seong (Fax No: +603 3392 8496) [with attachment]

Int. circ:
Tai Yee Wai, Chia Chi Choy, Khor Ying Ying, Wong Fei Kee, Yvonne Khoh Sim Hee

Ref: SWC/J180-2369-00/02.03.39/L/0007

SUNWAY CONSTRUCTION SDN BHD (27175-V)

Level 8, Menara Sunway, Jalan Lagoon Timur, Bandar Sunway, 46150 Petaling Jaya, Selangor Darul Ehsan, Malaysia.
Tel: +603 5639 9333 Fax: +603 5639 9530
www.sunway.com.my/suncon

Testimonial



Ref: SWC/J180-1366-00/02.03.104/L/0018
CHONG LEK ENGINEERING WORKS SDN BHD
Lot 4914,
6th Miles,
Jalan Teratai Off Jalan Meru,
41050 Klang, Selangor

Date: 15 July 2015

Tel: 603-3392 4978
Fax: 603-3392 5496

Attn: Mr. Ivan Chong Fu Seong

Dear Sir,

Proposed Design, Construction, Completion & Commissioning of 1) Guideway & Halts 2) Depot; 3) Park n Ride ; and 4) Mechanization of Oxidation Pond of Bus Rapid Transit ("BRT")
Re: CHONG LEK ENGINEERING WORKS – Steel Structural Work (BRT Halt 5 & Halt 6)

We had awarded the supply, delivery and installation of steel structure works at Halt 5 and Halt 6 for Bus Rapid Transit (*BRT*) – Sunway Line to your good company.

The steel members were delivered with 270 microns minimum film thickness of Nippon Paint, ST3 sweep blast form, element were pre-welded in the factory before delivering to the site for speed installation.

For the scope of works provided by you, it was done in a professional and courteous manner. Staff assigned to the project was dedicated and proactive in solving the matter on hand.

We would recommend you to other Sunway projects.

Thank you.

Yours faithfully,
SUNWAY CONSTRUCTION SDN. BHD.


Ho Meng Soon
Senior Project Manager

Ref: SWC/J180-1366-00/02.03.104/L/0018

SUNWAY CONSTRUCTION SDN BHD (37714)
Level 8, Menara Sunway, Jalan Lagoon Timur, Bandar Sunway, 46150 Petaling Jaya, Selangor Darul Ehsan, Malaysia.
Tel: +603 5639 9333 Fax: +603 5639 9530
www.sunway.com.my/suncon



安 裕 五 金 有 限 公 司
ANN JOO METAL SDN. BHD. (380518-P)
(A Wholly Owned Subsidiary of Ann Joo Resources Berhad) (371152-U)



Wisma Ann Joo, Lot 19391, Batu 8½, Jalan Klang Lama, 46000 Petaling Jaya, Selangor Darul Ehsan, Malaysia.
P.O. Box 8189, Pejabat Pos Kelana Jaya, 47301 Petaling Jaya, Selangor Darul Ehsan, Malaysia.
Tel: 603-7874 2233 (12 lines) Fax: 603-7874 1249 / 7874 1306 Email: enquiry.ajm@annjoo.com.my Website: www.annjoo.com.my
GST No: 000993767424

18th August 2015

Malaysian Resources Corporation Berhad,
Mohd Imran Tan Sri Mohamad Salim,
Executive Director,
Level 30, Menara Allianz Sentral,
No. 203, Jalan Tun Sambanthan,
Kuala Lumpur, P.O. BOX 12640,
50470 Kuala Lumpur.

Dear Sir,

RE: M/S Chong Lek Engineering Works Sdn Bhd.

The above subject matter refers.


We wish to confirm that M/s Chong Lek Engineering Works S/B has been servicing our Group for more than 10 years for the steel fabrications, installation works, material handling and maintenance works and is still continuing to service us. M/s Chong Lek Engineering Works has always able to complete its entire works / contracts within the targeted time schedule with no compromise in quality.

We understand that M/s Chong Lek Engineering Works is participating in your esteemed firm "Steel Structure Works for Tower 6 of the proposed mixed development of Phase 1A, Phase 1C and Phase 1F" project. We have no hesitation to recommend to your esteemed firm to consider M/s Chong Lek Engineering Works favourably for the above-mentioned project.

Please do not hesitate to contact the undersigned should you need any further reference or clarification.

Thank you.

Yours faithfully,


Lawrence Lim Aun Chuan
Managing Director

Testimonial



187475-V

Head Office

12th Floor, Menara Hap Seng

Jalan P. Ramlee

50250 Kuala Lumpur, Malaysia

Tel (603) 2148 8810

Fax (603) 2142 6003

Manufacturing & Operations

Wisma APEX

No 2A, Lor 290

Jalan T/P 5 Off Jalan Setia

Taman Perindustrian UEP

47600 Subang Jaya, Malaysia

Tel (603) 8024 2208, 8024 2091

Fax (603) 8024 1916, 8024 2314

19th August 2015

Malaysian Resources Corporation Berhad
Mohd Imran Tan Sri Mohamad Salim,
Executive Director,
Level 30, Menara Allianz Sentral,
No. 203, Jalan Tun Sambanthan,
50470 Kuala Lumpur

Dear Sir,

RE : CHONG LEK ENGINEERING WORKS SDN BHD

Please accept this letter as my highest recommendation of the construction firm, Chong Lek Engineering Works Sdn Bhd.

The success of any complex project depends in large measure on the team assembled and the team's ability to communicate and work collaboratively towards the goal. Chong Lek's service to the projects was excellent and their contribution to the construction team commendable.

Chong Lek Engineering Works Sdn Bhd has shown their ability to collaborate as team players and have been willing to be flexible with the schedules. Understand that it takes highly qualified personnel to maintain good relationship, manpower and material procurement were managed well and as adjustments were required Chong Lek smoothly made those adjustments to enhance the flow of construction progress.

It was a pleasure working with Chong Lek Engineering Works Sdn Bhd team and would welcome their contribution to future construction teams we work with. If you would like a reference for the future, we would be happy to provide one.

Thank you.

Yours faithfully,

APEX COMMUNICATIONS SDN BHD

Azizan Mustafa
Vice President
Development & Construction Division



Cert. No. KLR 6017280

ORIGINAL



A member of UEM Builders

Our Ref.: UEMC/MRT-S3/SITE/L/1761-2015

Date : 19th August 2015

Malaysian Resources Corporation Berhad

Mohd Imran Tan Sri Mohamad Salim,
Executive Director,
Level 30, Menara Allianz Sentral,
No. 203, Jalan Tun Sambanthan,
50470 Kuala Lumpur.

Dear Sir,

RE: CHONG LEK ENGINEERING WORKS SDN BHD

Above captioned subject referred, we would like to take this opportunity to write this letter of recommendation for Chong Lek Engineering Works Sdn Bhd and their working relationship with us through a variety of projects.

Chong Lek Engineering Works Sdn Bhd has demonstrated a great professionalism and performing the job with no flaw. I would emphasize on the quality, tidiness, accuracy and enthusiasms of the team.

In addition, they performed the work ahead of the schedule which leads to other contractor to complete their work faster as well.

I would recommend this company to others should there be any demand of their service.

Thank you.

Yours faithfully,

UEM CONSTRUCTION SDN. BHD.

LEE ENG HOE
Project Director

UEM Construction Sdn Bhd
(147388-P)

No. 5A, Jalan 51/217, Off Jalan Templer, 46050 Petaling Jaya, Selangor, Malaysia
Tel : +603-76517000 Fax : +603-7620 8010 Website : www.uembuilders.com

Testimonial



Date : 24th June 2020

Chong Lek Engineering Works Sdn Bhd
Lot 4914, 6th Miles,
Jalan Teratai Off Jalan Meru,
41050 Klang, Selangor
Attn : Mr Ivan Chong

Dear Sir,

CADANGAN TAMBAHAN DAN PERUBAHAN KEPADA 1 BLOK KEDAI/PEJABAT YANG MENGANDUNGI 5 TINGKAT KOLEJ DI TINGKAT 6-10 DAN 4 TINGKAT KEDAI/PEJABAT DI TINGKAT 11-14 (FASA 2C)

DIATAS SEBAHAGIAN LOT 20040 (LOT 2000 & 41), 5 & 31, JALAN CHERAS, JALAN PEEL DAN JALAN SHELLEY, SEKSYEN 90, WILAYAH PERSEKUTUAN, KUALA LUMPUR UNTUK SUNWAY INTEGRATED PROPERTIES SDN BHD ~ Velo College

RE : CHONG LEK ENGINEERING WORKS SDN BHD ~ Supply & Install Structural Steel Staircase

We had awarded the steel works for supply and install structural steel staircase for the Velo College to the above-mentioned contractor, for supply, fabricate, delivery, painting, galvanizing (handrail) and installation.

We have worked with Chong Lek Engineering Works for the past few projects and we have been extremely pleased with the works.

It is with pleasure that I share the following comments that Chong Lek Engineering Works Sdn Bhd has been an excellent sub-contractor in the area of service and fabrication. They are a dependable and trustworthy as a contractor. For the scope of works provided by them were done in a very professional and courteous manner.

Thank you for a job well done and I would highly recommend Chong Lek Engineering Works Sdn Bhd to any other organization.

Thank you.

Yours faithfully,

[SUNWAY CONSTRUCTION SDN BHD]

Name : Balamurugan Samikannu
Designation : Project Manager

SUNWAY CONSTRUCTION SDN BHD

Lot 4914, 6th Miles, Jalan Teratai Off Jalan Meru, 41050 Klang, Selangor, Malaysia
Tel : 03-3392 9657 / 5495 2694
Fax : 03-3392 5496
www.sunwayconstruction.com

SUNWAY®

Date: 04 April 2023

Ref: SWC/J180-2611-00/02.03.08/LI/0042

CHONG LEK ENGINEERING WORKS SDN BHD

Lot 4914, 6th Miles,
Jalan Teratai Off Jalan Meru,
41050 Klang,
Selangor Malaysia

Tel: 03-3392 9657/5495/2694
Fax: 03-3392 5496

Attn: Mr. Ivan Chong Fu Seong

Dear Sir,

CONSTRUCTION AND COMPLETION OF A PRIVATE INSTITUTIONAL BUILDING (PETRONAS LEADERSHIP CENTRE) WHICH CONSIST OF : 1 STOREY SEMI BASEMENT CAR PARK, 4 STOREY INSTITUTIONAL BUILDING, 2 UNITS OF GUARD HOUSE, 1 UNIT OF SURAU, 1 UNIT OF PUMP STATION AND SEWERAGE WORKS, 1 TNB SUBSTATION, LAKE AND ASSOCIATED WORKS, HARDSCAPE AND ASSOCIATED WORKS, ROAD AND DRAINAGE AND UPGRADING WORKS ON ANCILLARY BUILDING ON LOT 14624, 14625 AND 14626 AT JALAN INSTITUSI, BANDAR BARU BANGI, DAERAH SEPANG, SELANGOR DARUL EHSAN FOR PETRONAS MANAGEMENT TRAINING SDN BHD. CONTRACT NO.: PD&T/HC-GPD/2019/310

Re: *Testimonial*

Chong Lek Engineering Works Sdn Bhd has undertaken and successfully completed the aforesaid works to our satisfaction.

Chong Lek Engineering Works Sdn Bhd has provided their specialist services in a professional manner throughout the construction period which have enable them to complete this job in a timely manner.

Thank you.

Yours faithfully,

SUNWAY CONSTRUCTION SDN. BHD.

Richard Wong
Group Deputy Managing Director - Building Division

Ref: SWC/J180-2611-00/02.03.08/LI/0042

SUNWAY CONSTRUCTION SDN BHD

Lot 4914, 6th Miles, Jalan Teratai Off Jalan Meru, 41050 Klang, Selangor, Malaysia
Tel : 03-3392 9657 / 5495 2694
Fax : 03-3392 5496
www.sunwayconstruction.com

Testimonial



Our Ref: CONST/SPCSB/IPKB/SFH/2020-0001

Date : 01st July 2020

Chong Lek Engineering Works Sdn Bhd
Lot 4914, 6th Miles,
Jalan Teratai Off Jalan Meru,
41050 Klang, Selangor

To Whom It May Concern,

**CADANGAN KOMPLEKS INSTITUT PENYELIDIKAN KESIHATAN BERSEPADU (IPKB)
UNTUK KEMENTERIAN KESIHATAN MALAYSIA (KKM) DI BANDAR SETIA ALAM,
SELANGOR
PEDESTRIAN LINK BRIDGE**

- LETTER OF APPRECIATION

The purpose of this letter is to convey our appreciation for the excellent sub-contractor in the area of service and fabrication of the pedestrian link bridge provided by your company.

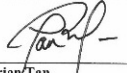
We would like to thank you your team for the work done of the Link Bridge that supplied by them has been satisfactory. The project was handled in a professional manner and your team was competent and knowledgeable.

We are fortunate to have you in our team and look forward to a successful working relationship with your company future.

Thank you.

Yours faithfully,

SETIA PRECAST SDN BHD



Brian Tan
General Manager
AS/lkh
Ar

SETIA PRECAST SDN BHD (347177-A)
S P Setia Bhd Corporate HQ, Level 2, Annexe Block, No.12, Persiaran Setia Dagang,
Setia Alam, Seksyen U13, 40170 Shah Alam, Selangor Darul Ehsan, Malaysia
T +603 3348 2200 F +603 3348 2222 E setiaprecast@spsetia.com www.spsetia.com
livelearnworkplay Malaysia | Vietnam | Australia | Singapore | China | United Kingdom



Date : 25 June 2020

Chong Lek Engineering Works Sdn. Bhd.
Lot 4914, 6th Miles,
Jalan Teratai Off Jalan Meru,
41050 Klang
Selangor D.E.

(Attn : Mr. Pong Chung Kuan)

Dear Sir,

Re : CHONG LEK ENGINEERING WORKS SDN. BHD.

We had awarded the below steel works to the above mentioned contractor for supply, fabrication, delivery and installation.


Item	Products and services supplied	Delivered month
1	Supply and install Water-cooled Duct #1, #2 and #3	Dec, 2017
2	Supply and install Water-cooled Sliding Duct	July, 2018 / Dec, 2019
3	Supply one complete set of EAF Roof Panel #1, #2, #3, #4 and #5	Sept, 2019

The works was done in a very professional and courteous manner. I would like to highlight the dedication, efficiency and enthusiasm of the company.

Please consider this company for your steel work project. I recommend them and look forward to working with them again.

Thank you.

Yours faithfully,
SOUTHERN STEEL ROD SDN. BHD.


Heng Chun Huat
Steel Making Plant 1
Mechanical Maintenance Manager

南達棒材
Southern Steel Rod Sdn. Bhd. (106074)
2725, Lorong Perusahaan 12,
Prai Industrial Estate,
13600 Prai, Pulau Pinang, Malaysia.
T : +(604) 3606549
F : +(604) 3606583

Testimonial



Date : 12th June 2020

Chong Lek Engineering Works Sdn Bhd
Lot 4914, 6th Miles,
Jalan Teratai Off Jalan Meru,
41050 Klang, Selangor
Attn : Mr Ivan Chong

Dear Sir,

Chong Lek Engineering Works Sdn Bhd

We had awarded the following steel structural fabrication works to the abovementioned contractor for supply, fabricate, delivery, painting of:

1. Fire Pump Shelter
2. Steel structure for Boiler chemical feed shelter
3. Steel structure for workshop and warehouse
4. Hoist beam for Fire water pump shelter building

I just wanted to let you know that it's been great working with Chong Lek who can deliver with tight deadlines and add value to the project. For the scope of works provided by them were done in a very professional and courteous manner.

Thank you for a job well done and I have no hesitation in recommending Chong Lek Engineering Works Sdn Bhd to the others should there be any need of their service.

I thank you.

Yours faithfully,
JURONG ENGINEERING LIMITED

Name : Tay Way Seng
Designation : EPC Procurement Dept

Page 1



Chong Lek Engineering Works Sdn. Bhd.
Lot 4914, 6th Miles.
Jalan Teratai off Jalan Meru.
41050 Klang,
Selangor.

(Attn: Mr.Chong Fu Seong)

Re: Products and Services supplied by Chong Lek Engineering Works Sdn. Bhd.

Item	Products and services supplied	Delivered Month
1	Supply and Install V Chamber	Dec, 2017/May, 2019
2	Modification of the Existing Oxygen Injection Technology for Furnace 1 and Furnace 2.	Mar,2018/Apr,2019
3	Supply Ladle Furnace Water Cooled Roof 1 & 2	May, 2018
4	Supply and Install 5 lengths of Water Cooled Duct 7, 8, 9, 10, 11	June, 2018
5	Supply and Install 7 lengths of Dia.4m Radiant Duct	June, 2019

Referring to the above products and services supplied to us. M/s Chong Lek Engineering Works has always able to complete its entire works within the targeted time schedule with no compromise in quality.

In addition, the product and services supplied was done in a very professional and courteous manner. I would like to highlight the dedication, efficiency and enthusiasm of the company.

I highly recommend this company to others in need of there service.

Sincerely,

Tham Lai Chai
General Manager – SHRC (SMP 2)

Testimonial



Date : 14 July 2020

Chong Lek Engineering Works Sdn. Bhd.
Lot 4914, 6th Miles,
Jalan Teratai Off Jalan Meru,
41050 Klang, Selangor D.E.

(Attention : Mr. Ivan Chong Fu Seong)

Subject : CHONG LEK ENGINEERING WORKS SDN. BHD.

We had awarded the below Water-Cooled Parts to Chong Lek Engineering Works Sdn. Bhd. for doing fabrication and supply the fabricated Water-Cooled Parts for our Meltshop within the delivery period stated in the list below.

Item	Fabricated of Water Cooled Parts	Delivered Period
1	80T Ladle Furnace Roof	Dec, 2018
2	AF6 Furnace Water Cooled Roof Panel Type 1,2 and 3 and Roof Delta.	Dec, 2018
3	Copper Block for VLB #4 & #5, Copper Block for VLB #1 & #3, Copper Block for VLB #6	Dec, 2019
4	AF6 Sidewall Water Cooled Panel Type H, E13,E9 etc.	June, 2019

The above Water-Cooled Parts are fabricated and supplied in a very professional and courteous manner. I would like to highlight the dedication, efficiency and enthusiasm of the team we are dealing with.

I would highly recommend this company to others in need of their services and continue to recommend them as our preferred supplier for steel fabrication and looking forward to work with them again.

Thank you.

Yours faithfully,
Natsteel Holding Pte. Lte.


.....
Ng Kek Loon
Vice President

Testimonial



Testimonial

- Singapore Workplace Safety and Health (WSH) Award 2019
- Singapore Workplace Safety and Health (WSH) Award 2023



Testimonial



Project References:-

NO.	PROJECT NAME	YEAR
1	BUILDING STEEL STRUCTURAL WORKS	1989
2	BUILDING STEEL STRUCTURAL WORKS - STEEL MELTSHP PROJECT	1980
3	ELECTRIC ARC FURNACE UPGRADING PROJECT	1980
4	BUILDING STEEL STRUCTURAL - LION STEEL INDUSTRIAL COMPLEX	1989
5	BUILDING STEEL STRUCTURAL - ROLLING MILLS NO. 1, NO. 2	1991
6	BUILDING STEEL STRUCTURAL - WIRE STORAGE	1990
7	BUILDING STEEL STRUCTURAL - LION METAL INDUSTRIAL COMPLEX	1989
8	BUILDING STEEL WORKS - AMALGAMATED CONTAINER FACTORY	1989~1990
9	BUILDING STEEL WORKS - LB ALUMINIUM FACTORY	1993
10	ASM-SMS - DUST COLLECTOR SYSTEM - BAG HOUSE PROJECT	1993
11	BUILDING STEEL WORKS - ASM - NEW SCRAP PROCESSING PLANT	1994
12	STEEL FABRICATED WORKS - CHIMNEY , TUNDISH, WATER PIPE	1993~2011

NO.	PROJECT NAME	YEAR
13	COOLER TUBE, DUCT, COMBUSTION & MIXING CHAMBER & HOPPER	2000~2011
14	ELECTRIC ARC FURNACE UPGRADING PROJECT	2000
15	ELECTRIC ARC FURNACE UPGRADING PROJECT	2000
16	TROMBONE COOLER TUBE & COMBUSTION CHAMBER PARTS	2008
17	RADIANT COOLER DUCT , WATER COOL PIPE DUCTING	2008
18	ROOF PANEL, A/F UPPER SHELL , DUCTING, M.CHAMBER W.C.D.	1996~2011
19	NATURAL COOLER	2000
20	MATERIALS RECEIVING AND HANDLING SYSTEM	2007
21	RAMP DOOR FOR DECK CARGO BARGES	2007
22	SHELL PANEL , ROOF PANEL & EBT PANEL	2003~2010
23	EBT, ROOF & WALL PANEL, LADLE ROOF & COOLER DUCTING	2003~2010
24	LADLE ROOF	2003~2010

Project References:-

NO.	PROJECT NAME	YEAR	NO.	PROJECT NAME	YEAR
25	STRUCTURAL STEEL WORKS FOR NEW CENTRALIZED WORKSHOP	2008	36	PACKAGE 16R - CONSTRUCTION & COMPLETION OF THE REMAINING WORKS FOR SINTER TAIL DEDUSTING, FINISH PRODUCT SCREENING ROOM, PALLETIZING ROOM, FINISH PRODUCT STORAGE BUNKER, BLENDING ROOM, TRANSFER STATIONS & CONVEYOR TUNNELS & SUPPORTS	2009~2010
26	DRI - AIR DUCT SUPPORT, VAPOR REMOVAL, VESSELS, RECOVERING CASING, BIG BORE PIPE & JETTY RECEIVING HOPPER	2006	37	PACKAGE 20R - CONSTRUCTION & COMPLETION OF THE REMAINING WORKS FOR SLAG GRANULATION PLANT, WATER TREATMENT PLANT & SUB-STATION, ORE BUNKER DEDUSTER PLATFORM & BF GAS TANK FOUNDATION & ANCILLARY BUILDINGS	2009~2010
27	DUST COLLECTOR REVAMPING UPGRADING PROJECT	2009	38	PACKAGE 21 - CONSTRUCTION & COMPLETION OF TRANSFER STATIONS & CONVEYOR FOUNDATIONS, SUB-STATIONS NO.2 & 3, UNDERGROUND RECEIVING BUNKER, CRUSHER ROOM, SCREENING ROOM, SPRINKLER WATER TANK & PUMP STATION AND DEDUSTING BUILDINGS & FOUNDATIONS AT RAW MATERIAL YARD	2009~2010
28	RAW MATERIAL YARD CONVEYOR SYSTEM & TRANSFER STATION	2007	39	PACKAGE 22 - CONSTRUCTION & COMPLETION OF BLENDING STORAGE BUNKER, DEDUSTING & SUB-STATION FOR BLENDING BUNKER, MAIN CONTROL BUILDING, AIR COMPRESSOR AND FOUNDATION FOR CONVEYOR TL10, TL11 & TL12 AT RAW MATERIAL STORAGE YARD	2009~2010
29	RAW MATERIAL YARD STACKER RECLAIMER INSTALLATION	2009			
30	STEEL MAKING PLANT DUST COLLECTOR MAINTENANCE PROJECT	2008			
31	SOAKING FURNACE UPGRADING PROJECT	2008			
32	DROP OUT BOX, WATER-COOLED DUCT, FIXED DUCT	2003~2011			
33	SCRAP CLEANING MACHINE - FABRICATION & INSTALLATION	2009			
34	10TPH COAL GRINDING/SUPPORT LEG - LIME KILN PROJECT	2006			
35	PACKAGE 9 - CONSTRUCTION AND COMPLETION OF RAW MATERIAL YARD BUNKER NO. 1 & 2 AND CONVEYOR TUNNEL TL-1 & TL-2	2008			

Project References:-

NO.	PROJECT NAME	YEAR
40	OVERHEAD CONVEYOR GANTRY STEEL STRUCTURE WORKS	2010
41	1000M3 LIME SILO AND STRUCTURES	2010
42	COMPLETE DUST COLLECTOR SYSTEM FOR WASTE GAS FILTER SYSTEM (150,000 M3/H) & LIME DUST FILTER SYSTEM (90,000 M3/H)	2010
43	COMPLETE DUST COLLECTOR SYSTEM FOR SKULL CUTTING (80,000 M3/H)	2010
44	1x10 TPH LIME HYDRATION PLANT	2010
45	LIME KILN - PHASE 2	2010
46	ROLLING MILL - CIVIL & STRUCTURE	2010
47	DESIGN & BUILD RMY SOIL TREATMENT (STONE COLUMN)	2010
48	EXPANSION TANK PLATFORM	2011
49	WATER COOLED HOT GAS LINE EAF #6, #7 & #8	2011
50	WATER COOLED HOT GAS DUCT SUPPORT	2011
51	STEEL STAIRCASE, HAND RAILING & CHANNEL SUPPORT	2011
52	HOPPER BODY FOR 758 CMS BAG FILTER	2011

NO.	PROJECT NAME	YEAR
53	STEEL STRUCTURE FOR GATE HOUSE & FIRE TRUCK STATION	2011
54	COMBUSTION CHAMBER SUCTION ELBOW ASSEMBLY	2011
55	NATURAL GAS & NITROGEN PIPING WORKS FOR SOAKING FURNACE	2011
56	RADIANT COOLER DUCT, ROOF PANEL, WATER COOLED PANEL	2011
57	DUCTING, DUST COLLECTOR SYSTEM, PANEL. EBT PANEL	2011
58	STEEL BINS WORKS	2011
59	INSTALLATION WORKS FOR DOWN GAUGE ALIGNMENT - SLAG PROCESSING PLANT	2012
60	PROPOSED BILLET GRINDING & BILLET SHOT CHIMNEY EXTENSION	2012
61	GAS TURBINE SILENCER	2012
62	STRUCTURAL STEEL WORKS FOR ELPION PROJECT AT BANTING, SELANGOR.	2012
63	FLYING SHEAR , CRANK SHAFT, GEAR, GEAR SHAFT, LADLE DISH END PLATE	2012

Project References:-

NO.	PROJECT NAME	YEAR
64	PIPING WORKS FOR BGV WIRE ROD MILL REVAMPING PROJECT	2012
65	GANTRY CRANE STRUCTURE	2012
66	STEEL BIN WORKS PACKAGES - PASIR GUDANG, JOHOR	2012
67	FABRICATE EXPANSION JOINT	2012
68	MILD STEEL SILO AND STAINLESS STEEL SILO	2012
69	RADIANT COOLER DUCT, ROOF PANEL, WATER COOLED PANEL COPPER CONTACT PAD, WATER COOLED DOUBLE JACKET DUCT	2012
70	WATER COOLED DUCT , COOLING PANEL, ROOF PANEL	2012
71	ROOF PANEL, PTI PANEL	2012
72	RADIANT COOLER DUCT, ROOF PANEL, WATER COOLED PANEL COPPER CONTACT PAD, WATER COOLED DOUBLE JACKET DUCT	2012
73	TUNDISH BODY, WATER COOL PANEL, EBT PANEL	2012
74	CONSTRUCTION SAMPLE PARTITION	2012
75	LOWER SHELL STRUCTURE, VLB PANEL , SHAFT FURNACE PARTS TILT FRAME , WATER COOLED DUCT SMLS LADLE DISH & ETC.	2013
76	STEEL WATER TANK, 200M3, 3000M3 & 5000 M3	2013
77	TRANSFER TOWER TS11, CONVEYOR BC2A/2B, CHUTE BC2A/2B	2013

NO.	PROJECT NAME	YEAR
78	UPPER SHELL PANEL, ROOF PANEL, WATER COOLED DUCT	2013
79	NEW ROOF PANEL, WATER COOLED PANEL & DOOR TUNNER,	2013
80	DC LOWER SHEEL, PANEL, WATER COOLED DUCT , LADLE HOOD SHAFT FURNACE PARTS, TILT FRAME	2013
81	MILD STEEL WORKS - STAIRCASE	2013
82	STRUCTURAL STEEL WORKS - KERTIH, KEMANMAN	2013
83	STRUCTURAL STEEL WORKS - LINK BRIDGE	2013
84	STAINLESS STEEL SILO	2013
85	WATER COOLED PANEL NO. 8,9,10, ROOF ELBOW	2013
86	COPPER CONTACT PAD, SHELL PANEL, BSE CU-STEEL PANEL	2013
87	WATER COOLED DUCT, FIX DUCT, MOBILE DUCT,LADLE HOOD,	2013
88	PANEL, WATER COOLED DUCT, ROOF, HOOD	2013
89	SRUCTURAL STEEL WORKS FOR CJ BIO M-PROJECT	2013
90	PROJECT OM-041-CONSTRUCTION, ERECTION & EQUIPMENT INSTALLATION FOR SME-2 WET PLANT SUPERSTRUCTURE, PIPERACK	2013

Project References:-

NO.	PROJECT NAME	YEAR	NO.	PROJECT NAME	YEAR
91	VLB PANEL, WC PANEL, SCRAP BUCKET, BUCKET LINK, LADLE DISH PLATE, SLAG HANDLING	2014	103	INSTALL J-BOLT FOR HALF 3, HALT 4 & HALT 5 STEEL STRUCTURE WORKS & BONDEK-BRT - HALT 5 & BRT HALT 6 STEEL STRUCTURE WORKS - SP3	2014
92	FABRICATE 70T EMERGENCY CASTING LADLE V-CHAMBER, VLB WALL PANEL	2014	104	COOLED PANEL & HEAT EXCHANGER	2014
93	FABRICATE & REPLACEMENT OF KILN INLET SEAL	2014	105	M-PROJECT - FERTILLZER (PROJECT NO:MM2)	2014
94	FABRICATE IF CHARGES SYSTEM AND SUPPLY OF DN450 FLANGE	2014	106	SUPPLY, FABRICATE & INSTALL CONVEYOR BELT	2014
95	WATER COOLED PANEL, WATER COOLED DUCT & ETC	2014	107	KVMRT PACKAGE V8- FABRICATION OF STEEL STRUCTURE WORKS OF GIRDER & TRUSSES	2015
96	FABRICATE SETTLING CHAMBER PANEL, DUCT STRUCTURE ROOF TRUSS FOR BLUESCOPE LYSAGHT	2014	108	UPPER SHELL PANEL	2015
97	EXPANSION JOINT FLANGE FOR CHAMBER	2014	109	FABRICATE & INSTALLATION OF DUCTING NO. 1 ~ NO. 6	2015
98	PALM OLEO RAWANG (PO-017) SUBSTRUCTURE, SUPERSTRUCTURE AND EQUIPMENT INSTALL	2014	110	FABRICATE AND DELIVER LADLE HOOD LF1 RADIANT COOLER FOR EAF 1 REPAIR OF EBT PANEL	2015
99	TO FABRICATE & INSTALL MILD STEEL CHIMNEY FOR F27 CONSTRUCTION OF COOLING CHILLER PLATFORM	2014	111	FABRICATE & INSTALLATION OF RAW COAL VIBRATION SCREEN HACK & LIFTING OF DOOR OPENING & EXTENSION PLATFORM TO FABRICATE & INSTALL THE CEMENT MILLS NO. 6 MODIFICATION	2015
100	FAB. MOLTEN SULPHUR TANKS PROJECT - EP0043-CONST. ERECTION & EQUIPMENT INSTALLATION FOR EP-4 RG SME-2-PROJECT AREA 1 - FILTER PRESS BUILDING TO INSTALL EQUIPMENT AT AREA 1	2014	112	P38 HOIST BEAM MODIFICATION, DISMANTLE 34E3 TOP MOTOR TO INSTALL THE AGITATOR FOR MOLTEN SULPHUR TANK	2015
101	WATER COOLED DUCT, FIX DUCT, MOBILE DUCT, LADLE HOOD,	2014	113	STEEL SUPPORT FOR CYCLONE AT LEVEL 8 PREHEATER TOWER	2015
102	PANEL, WATER COOLED DUCT, ROOF, HOOD	2014	114	KVMRT PACKAGE S3-FABRICATION & INSTALLATION OF ROOF TRUSS	2015
			115	KVMRT PACKAGE S3-FABRICATION & INSTALLATION OF LINK BRIDGE	2015

Project References:-

NO.	PROJECT NAME	YEAR
116	CJ-BIO M-PROJECT - DA-3274 STRUCTURE	2015
	CJ-BIO-C2 PROJECT - C2 Building Steel Struture (MC2-SUB-CS-002)	
	CJ-BIO-C2 PROJECT - CRYSTALIZER STEE (MC2-SUB-CS-005)	
117	FABRICATE OF NEW SKAG DOOR PANEL & ROOF PANEL	2015
118	FABRICATE AF 6 FURNACE COOLED DELTA RING & PANEL	2015
119	FABRICATE SPACE TUBE C/W NUT TO BINTULU	2015
	FABRICATE SPETCTACLE BLIND PLATE	
120	STEEL STRUCTURE WORKS - PERUMAHAN 5	2015
121	EQUIPMENT INSTALLATION	2015
122	FABRICATE OF SOCKET AND PULLY	2015
123	NEW 1000 CUBIC METER WATER TANK	2015
124	FABRICATE & INSTALLATION OF RAW MILL 1 NOZZLE	2015
125	FABRICATE & INSTALLATION OF CSO ROOM STRUCTURAL STEEL	2015
126	FABRICATE & INSTALL OF STEEL STRUCTURE WORKS (MALL) AT JOHOR BHARU	2015
127	ROOM CEILING SUPPORT AT THE CURVE STATION & ONE U STATION MRT STATION - ONE UTAMA , DAMANSARA :- FABRICATE & INSTALLATION OF - LIFT FRAME AT TTDI & ONE UTAMA	2015

NO.	PROJECT NAME	YEAR
128	CJ-BIO-C2 PROJECT - C2-BUILDING DECK (MC2-SUB-CS-008)	2016
	CJ-BIO-C2 PROJECT - C2 EXTERIOR WORKS (MC2-SUB-CS-010)	
	CJ-BIO-C2 PROJECT - C2-PIPE RACK (MC2-SUB-CS-011)	
	CJ-BIO-C2 PROJECT - C2 New Product Warehouse (MC2-SUB-CS-013)	
	CJ-BIO-C2 PROJECT - C2-SCRUBBER STACK (MC2-SUB-CS-019)	
	CJ-BIO-C2 PROJECT - C2- Stainless Steel Tank (MC2-SUB-ME-00)	
129	DESARU CONFERENCE CENTRE - METAL ROOF COVERING WORKS DESARU CONFERENCE CENTRE - STEEL STRUCTURAL WORKS	2016
130	COPPER BLOCK FOR VLB #1/3, #4/5, 80T LADLE ROOF , DELTA RING	2016
131	STRUCTURAL STEEL WORKS FOR UMV (PACKAGE 1,2 & 3-PRACEL F) STRUCTURAL STEEL WORKS FOR UMV (PRACELCP3)	2016
132	FABRICATE & ERECTION OF 18 UNITS OF STAINLESS STEEL STORAGE TANK	2016
133	FABRICATE & INSTALLATION OF - LINK BRIDGE STEEL STRUCTURE	2016
134	STEEL CONNECTION FOR CANOPY & BEAM STRENGTHENING WORKS	2016
135	CJ-BIO-C3 PROJECT - C3-Fermentation Extension (MM3-SUB-CS-016) CJ-BIO-C3 PROJECT - C3 Refinery #2 & #4 (MM3-SUB-CS-018) CJ-BIO-C3 PROJECT - C3-Deck Plate (MM3-SUB-CS-022) CJ-BIO-C3 PROJECT - C3 4 Sets of Tanks (MM3-SUB-ME-006) CJ-BIO-C3 PROJECT - C3-Exterior Works (MM3-SUB-CS-024) CJ-BIO-C3 PROJECT - C3-Yard Steel Structure 1 (MM3-SUB-CS-025) CJ-BIO-C3 PROJECT - C3-Yard Steel Structure 2 (MM3-SUB-CS-026)	2017
136	MRT - FABRICATE & INSTALLATION OF - LINK BRIDGE STEEL STRUCTURE FOR ONE UTAMA STATION	2017

Project References:-

NO.	PROJECT NAME	YEAR
137	STEEL STRUCTURE WORKS FOR KIBING GLASS FACTORY ,	2017
138	STRUCTURAL WORKS - SYKBRIDGE AND ENTRANCE ARCH , CYBER	2017
139	FABRICATE, INSPECTION OF PIPING C/W CONNECTION STRUCTURAL WORKS -ENCLOSURE, SUPPORT, FLUIDIC FENCE, BAFFLE WALL	2017
140	FABRICATE OF FIRE PUMP SHELTER , BOILER CHEMICAL FEED SHELTER STEEL STRUCTURE WORKS FOR WORKSHOLP & WARE HOUSE	2017
141	FABRICATE STEEL STRUCTURE FOR DASH CB3	2017
142	IPKB-KKM-PEDESTRIAN LINK BRIDGE	2017
143	FABRICATE CANTILEVEL GANTRY CRANE STRUCTURAL - 10T X 28.6 SPAN	2017
144	STRUCTURAL WORKS - OFFICE TOWER, PARKING EXTRANAL WORKS - PARCEL F, PKG3 & PKG 4	2017
145	SUPPLY & INSTALL CHIMNEY AT IPKB, SETIA ALAM	2017
146	FABRICATE OF 80 TONS LADLE AF6 FURNACE ROOF WATER COOLED DELTA, SCRAP BUCKET BOTTOM PLATE	2017
147	SCRAP BUCKET 75M3 AND 90TONS STEEL LADLE SINGLE WALL DUCT REPAIR OF COPPER CONTACT FENCE	2017
148	FABRICATE & REPLACE WCD	2017

NO.	PROJECT NAME	YEAR
149	FABRICATE & REPLACE V- CHAMBER DUCT MODIFY EXISTING VLB SYSTEM	2017
150	FAB. ZONTECH DESIGNED WATER COOLED BURNES PANEL , NEW UPPER SHELL PANEL	2017
151	SUPPLY AND INSTALL GALVANISED MILD STEEL FRAMED ACCESS DOOR	2017
152	FABRICATE NEW UPPER SHELL PANEL #8,#16, REPLACE WCD E1,E2,E3	2018
153	FABRICATE LF WATER COOLED ROOF 1 & 2 FABRICATE PTI WALL PANEL , WATER COOLED DUCT MODIFY EXISTING VLB SYSTEM	2018
154	FABRICATE WATER COOLED SLIDGING DUCT, SETTLING CHAMBER PANEL	2018
155	STEEL STRUCTURAL WORKS - FARM 8 HOUSE EGG FRAME	2018
156	STEEL STRUCTURAL WORKS - VRU SKID C STEEL STRUCTURAL WORKS - BLOWER INLET STACK , ORIFICE PLATE GALVINIZED PIPING , ANCHOR BOLT, CABLE TRAY, CONTROL PANEL STRUCTURAL - RUNNERS, HEADERS, SUPPORT , RADIATION SHIELDS INSTALLATION OF DIALOG ENCLOSED GROUND FLARE 2 - TAG NO: 9189937	2018
157	STRUCTURAL PROJECT - ENCLOSURE , SUPPORT FABRICATE SPREADER BAR C/W TEST LOAD PROPANE PIPING	2018
158	LRT 3 - STEEL STRUCTURAL WORKS FOR STABLING YARD - FROM BANDAR UTAMA TO JOHAN SETIA	2018

Project References:-

NO.	PROJECT NAME	YEAR
159	STRUCTURAL STEEL WORKS - AIR COOLING TUBE	2018
	STRUCTURAL STEEL WORKS - COMBUSTION CHAMBER PANEL	
	STRUCTURAL STEEL WORKS - SKULL CUTTING DUCT	
160	FABRICATE SINGLE GIRDER GANTRY CRANE STRUCTURAL	2018
161	STEEL STRUCTURE STAIRCASE WITH HANDRAIL	2018
162	FABRICATE OF FIRE PUMP SHELTER , BOILER CHEMICAL, FEED SHELTER	2018
163	SUPPLY & INSTALL STRUCTURAL FOR FIXING OF ALUMINIUM DIAGRID	2018
164	STEEL WORK FABRICATE - CROSSHEAD STOP END PLATE, SPINDLE BRACKET VIADUCT DECKING	2018
165	FABRICATE KUM SOO 80T LADLE ROOF, MODIFY 80T LADLE ROOF DELTA RING	2018
166	FABRICATE NEW COOLING TUBE ,ELBOW, COMBUSTION CHAMBER PANEL,	2018
167	C3-NEW PRODUCT WAREHOUSE	2018
168	STEEL STRUCTURAL WORKS FOR CAR PARK CANOPY AND CHILLER PLATFORM	2018
169	FABRICATE WATER COOLED SECTION AND WATER COOLED COVER	2018
170	BEAM FOR TOWER CRANE	2018
171	CNC CUTTING MACHINE TO CUT PLATE	2018
172	VELO COLLEGE - STRUCTURAL STEEL STAIRCASE	2018

NO.	PROJECT NAME	YEAR
173	OM MATERIALS (SARAWAK) - FERRO SILICON PLANT	2019
174	PROJECT MRT LALUAN 2, SUNGAI BULOH-SERDANG - PUTRAJAYA (SSP) PACKAGE S210-STEEL STRUCTURAL WORKS- ELEAVATED STATION	2019
175	STEEL STRUCTURAL WORKS FOR CONSTRUCTION & COMPLETION OF A PRIVATE INSTITUTIONAL BUILDING (PETRONAS LEADERSHIP CENTRE) FOR PETRONAS MANAGEMENT TRAINING SDN. BHD. (PLC)	2019
176	STEEL STRUCTURAL WORKS FOR PUBLIC REALM WORKS (PHASE 1) AT THE TUN RAZAK EXCHANGE TRX CITY SDN. BHD. (C6) C9-BRIDGE STEEL STRUCTURE WORKS	2019
177	STEEL STRUCTURE FOR LANGKAWI TOWER	2019
178	LABOUR FOR PIPE RACK AND HANDRAIL STEEL FABRICATION	2019
179	FABRICATE , INSPECTION OF STACK, VCU SKID, BLOWER SKID DSC PIPE, VCN STACK, KO DRUM, PIPE SPOOLS STAIR STOWER , PLATFORM AND STACK CROSSOVER DUCT	2019
180	SPECIAL STEEL PART - S-TRAVEL SWINGER VERTICAL /HORIZONTAL PROFILE & INNNER STOP - END FOR MRT T315	2019
181	SUPPLY , DELIVERY & INSTALLATION OF ROOF STRUTURE WORKS - STESEN MONORAIL HANG TUAH	2019
182	SUPPLY OF STEEL FIXED DUCT	2019
183	SUPPLY OF DUMMY BAR	2019

Project References:-

NO.	PROJECT NAME	YEAR
184	FABRICATE OF POST COMBUSTION TYPE S1 ~ S3, K1 ~ K7, Q1~Q6,	2020
185	FABRICATE AND DELIVERY OF ROOF PANEL TYPE 1,2,3, LADLE ROOF, WATER COOLED PANEL TYPE H,D, VLB BOX	2020
186	SUB CONTRACT FOR SUPPLY , FABRICATE , DELIVERY AND INSTALLATION OF STEEL STRUCTURAL WORKS FOR STATION 18 AND 22 (LRT 3 PKG GS07-08)	2020
187	PACKAGE S208 : SUPPLY , FAB, DELIVERY & INSTALLATION STEEL STRUCTURAL AT TAMAN PUTRA PERMAI STATION FOR MRT S208,	2020
188	THERMAL OXIDIZER VESSEL, DUCT QUENCH MIXER & DUCT LADDER AND PLATFORM	2021
189	CONSTRUCTION AND COMPLETION OF SERDANG MAINTENANCE DEPOT STRUCTURAL STEEL WORK FOR NEW WAREHOUSE	2021
190	THE CONSTRUCTION & COMPLETION OF STEEL STRUCTURAL, METAL ROOFING AND OTHERS ACCOCIATED WORKS FOR ADDITION AND ALTERATION WORKS (A & A) AT TITIWANGSA STATION (ST2)	2021
191	STEEL MOULD FABRICATION AND MODIFICATION WORKS	2021
192	FURNACE PANEL, SHAFT BEAM AND PIPE CAP , VLB COPPER BLOCK	2022
193	COMBUSTION CHAMBER, STAGING SKID, FFG SKID, PIPING, SEAL DRUM , KO DRUM , INSTRUMENT SUPPORTS, INTERMEDIATE DUCTS	2022
194	THERMAL SHAFT, NITROGEN GENERATOR INSTALLATION, SEDIMENTATION POND OIL SKIMMER INSTALLATION	2022

NO.	PROJECT NAME	YEAR
195	THERMAL SHAFT WITH PADDLES, NITROGEN GENERATOR INSTALLATION	2022
196	SUPPLY OF FIGHT GLASS, ACRYLIC ROUND, END FIX GRATE, CAST STEEL STOKER, DRAG LINK CHAIN , SPOCKET MOVING GRATE	2022
197	STEEL STRUCTURE PACKAGE WITHOUT CANTEEN FOR AHP	2022
198	BEARING RING FOR IDER ROLLER	2022
199	SUPPLY OF WATER COOLED PANEL & VLB COPPER BOX	2022
200	FABRICATE SUPPLY & REPLACE NEW DESIGN OF WATER COOLED DUCT, U-TUNNEL, DUMMY BAR	2022
201	BENDED PLATE 28MM FOR SCRAP BASKET, SCRAP BASKET BOTTOM PLATE	2023
202	STEEL FABRICATE FOR COAL POST STRUCTURES	2023
203	FABRICATE & REPLACEMENT OF SWD 12 TO 17, RING FOR ROLLING MILLS PARTS, ROOF PANEL	2023
204	MAJOR REPAIR TO SMP2, MOVEABLE WATER COOLED DUCT D1 & D2	2023
205	CIRCULAR STEEL COLUMN FOR SHAW TOWER PROJECT	2023
206	SITE INSTALLATION FOR ENCLOSED GROUND FLARE FOR TOP GLOVE PROJECT	2023

Project References:-

NO.	PROJECT NAME	YEAR
207	STEEL STRUCTURAL WORKS OF RTS LINK JB	2024
208	SUPPLY OF THERMAL SHAFT C/W WITH PADDLES FOR PADDLE COOLER	2024
209	SUPPLY OF WATER COOLED DUCT NO. 7, RING & PIN, PINION GEAR SHAFT, SCREW FOR METAL ROLLING MILLS, DOOR TUNNER	2024
210	SUPPLY OF STEEL DUMMY ASSEMBLY	2024
211	SUPPLY OF FLY ASH CONVEYOR, ACYLIC SIGHT GLASS, KA-DRAG CHAIN	2024
212	SUPPLY OF AF6 COOLED PANEL, ROTARY SEAL, MANDREL NBR GASKET, VABRATION SENSOR	2024
213	SUPPLY OF LIFTING PLATFORM 14.4M X 4.9M X26MT	2024
214	TO DIAMANTLE AND REINSTALL (REFURBISH WORKS) 3 NOS OF EXISTING TRUSSES	2024

Project References:-

- **Air Receiver Tank**



Project References:-

- **Air Storage Tank**



Project References:-

- Heat Exchanger



Project References:-

- **Storage Tank**



Project References:-

- **Steel Water Tank – 200m³, 3000m³ & 5000m³**



Project References:-

- **Stainless Steel Storage Tank**



Project References:–

- Lime Silo



Project References:-

- **Lime Stone Bunker**



Project References:-

- **Coal Dust Silo**



Project References:-

- **Steel Bin Works (Flour Mill)**



Project References:-

- **Header Box**



Project References:-

- **Pipe Rack Fabrication**



Project References:–

- **Ground Flare Fabrication & Installation**



Project References:-

- **Ground Flare Fabrication & Installation**



Project References:-

- **Ground Flare Fabrication & Installation**



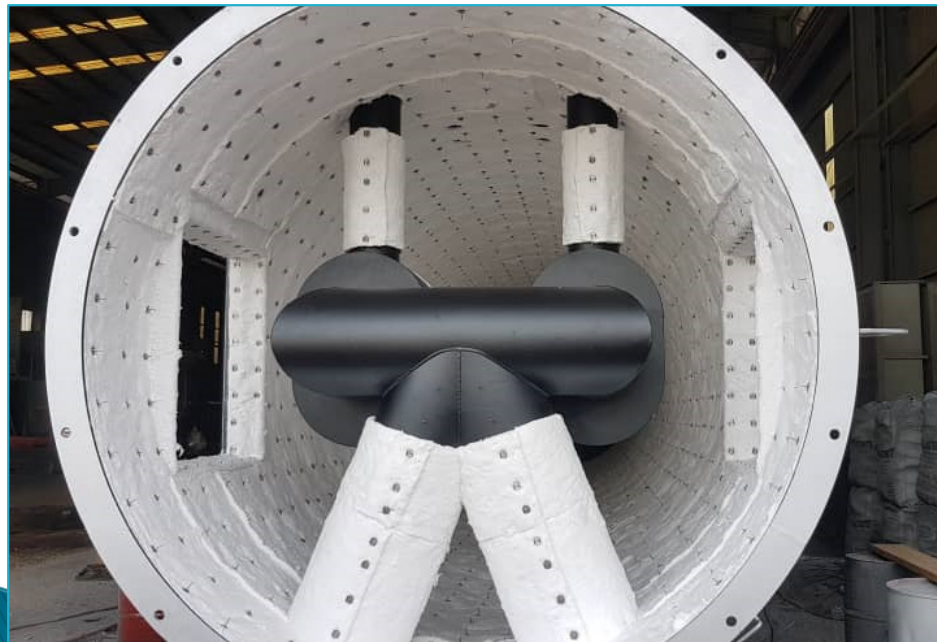
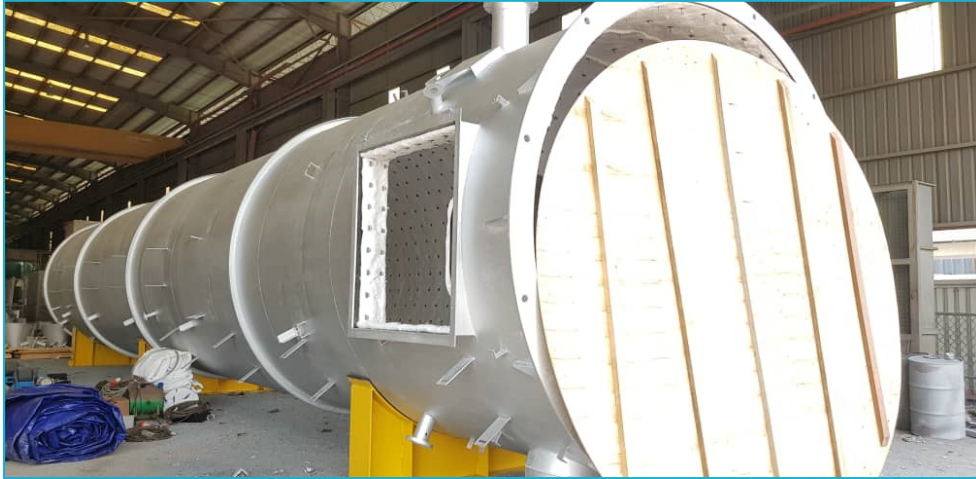
Project References:-

- **Vent Stack & Stair Tower**



Project References:-

- **Vent Stack**



Project References:-

- **Knock Out Drum**



Project References:–

- Vapour Recovery Unit



Project References:-

- Skid, Pipe Spool



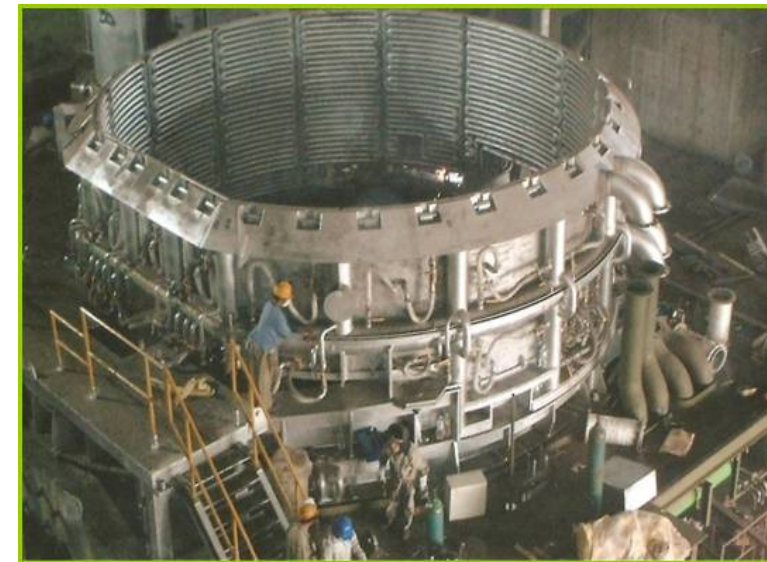
Project References:-

- Skid, Pipe Spool



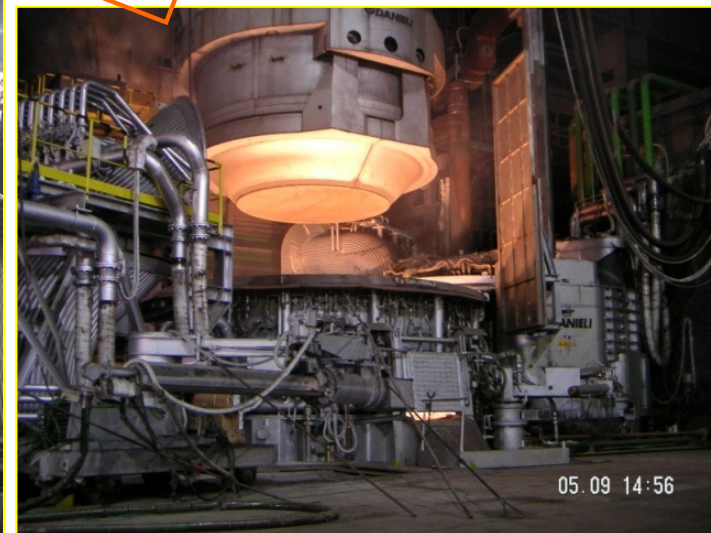
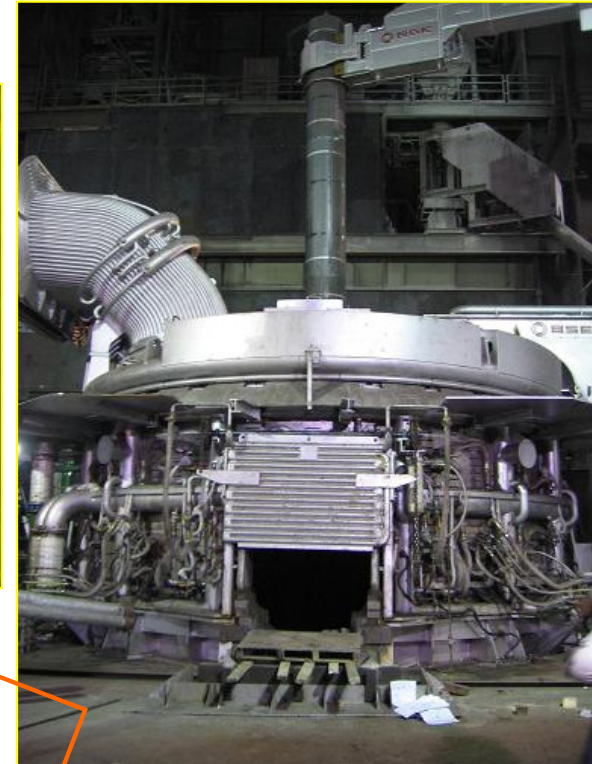
Project References:-

- Furnace Cooling System (Steel & Copper)
- Water-Cooled Upper Shell



Project References:-

- **Electric Arc Furnace Upgrading Project**



Project References:-

- Bottom Shell
- Water-Cooled Roof



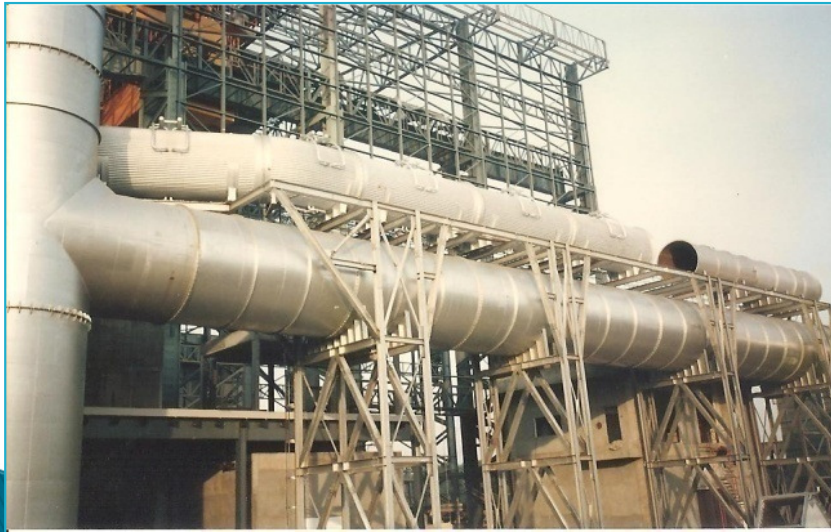
Project References:-

- **Water-Cooled Roof**



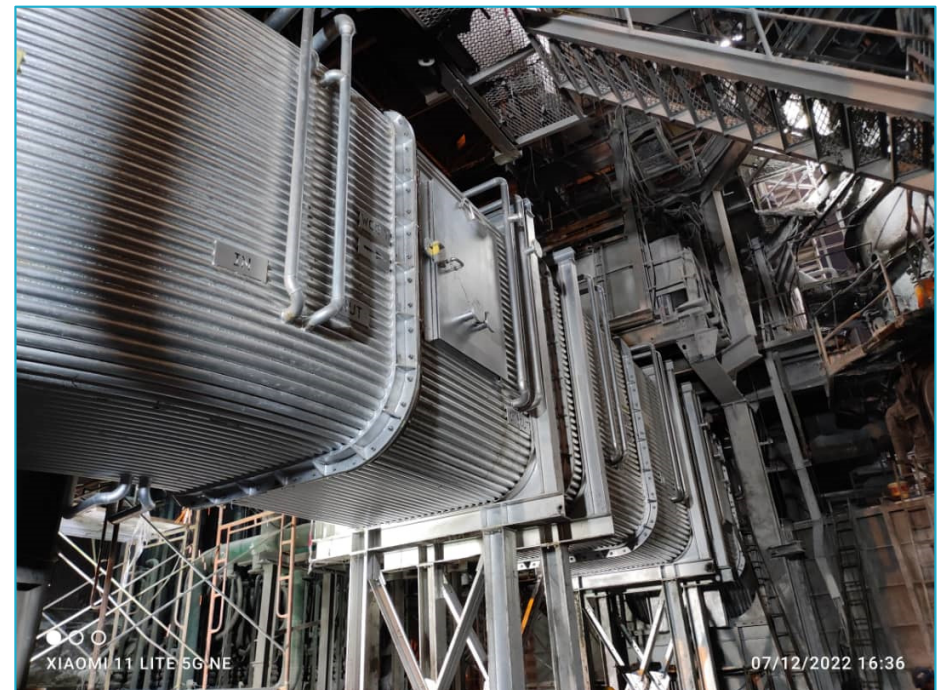
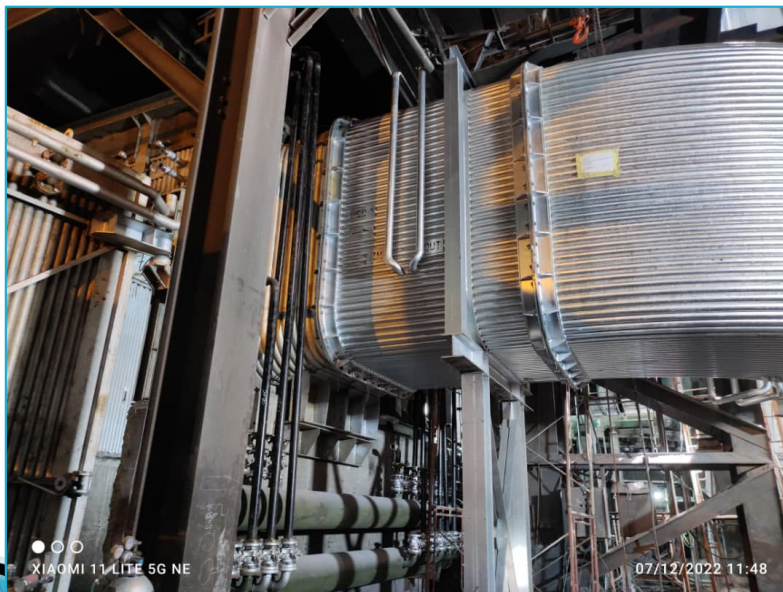
Project References:-

- **Water-Cooled Duct**
- **Air Duct**



Project References:–

- **Water-Cooled Duct**



Project References:-

- **Water-Cooled Duct**



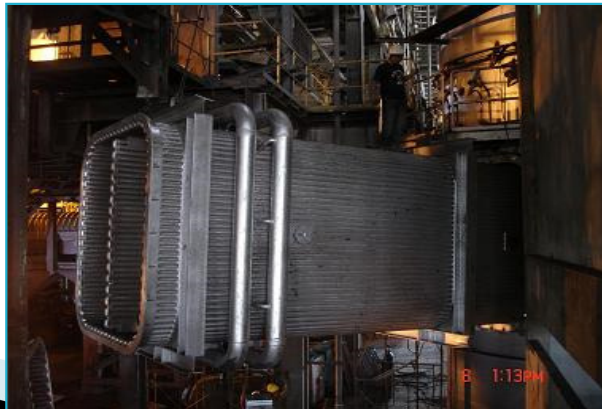
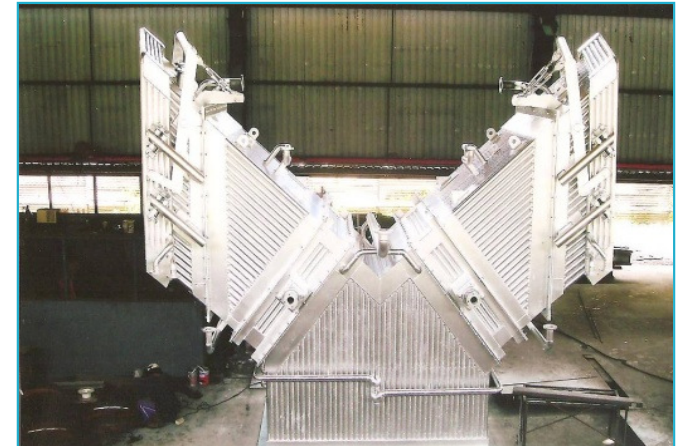
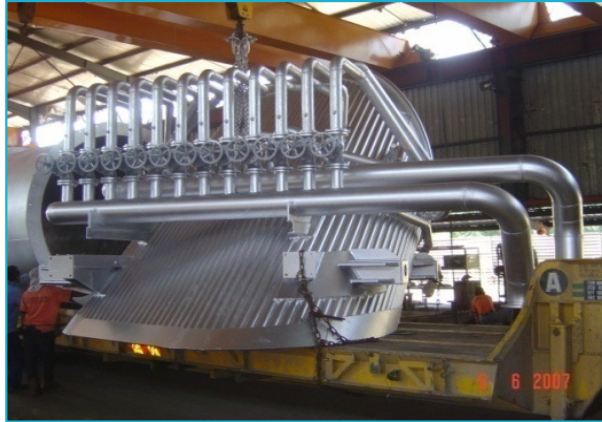
Project References:-

- **Dust Collector System**



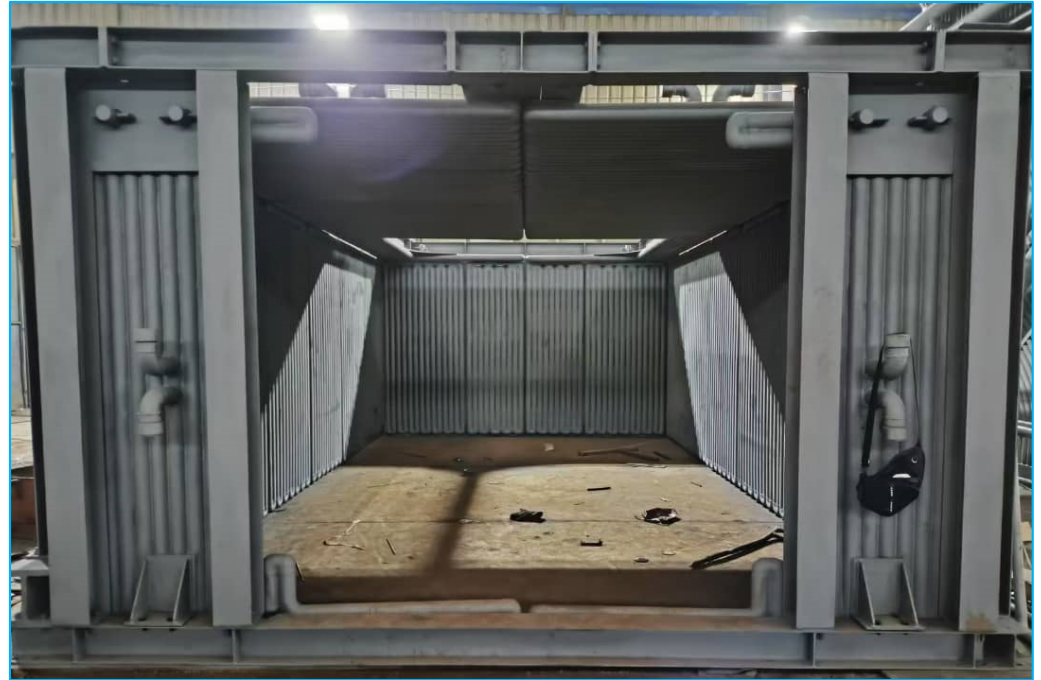
Project References:-

- Drop Out Box, Water-Cooled Duct, Fixed Duct



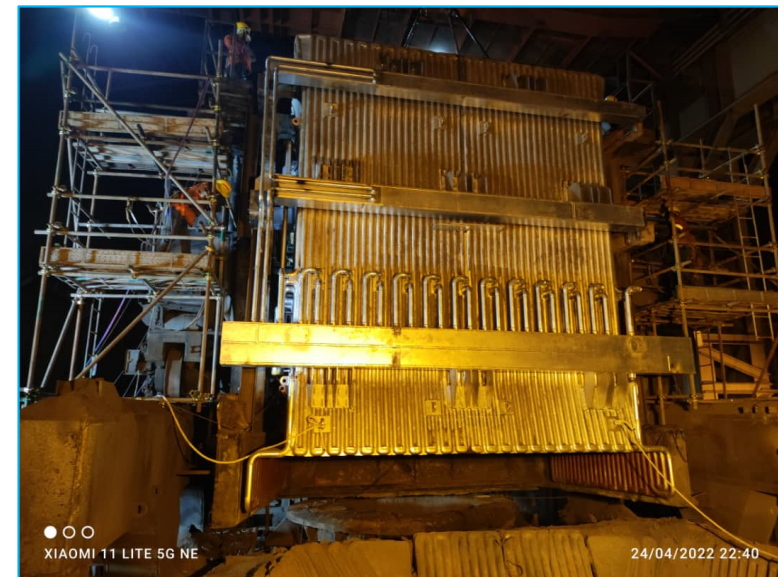
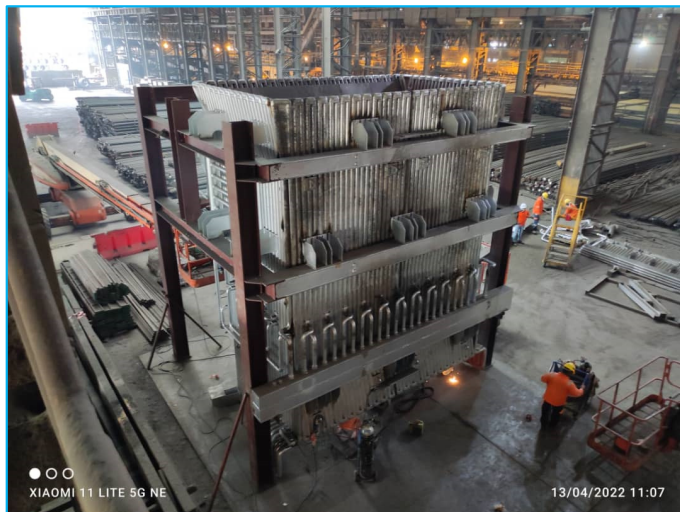
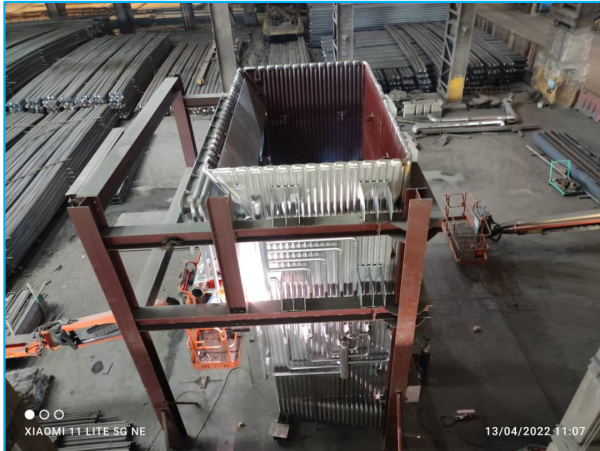
Project References:-

- Drop Out Box



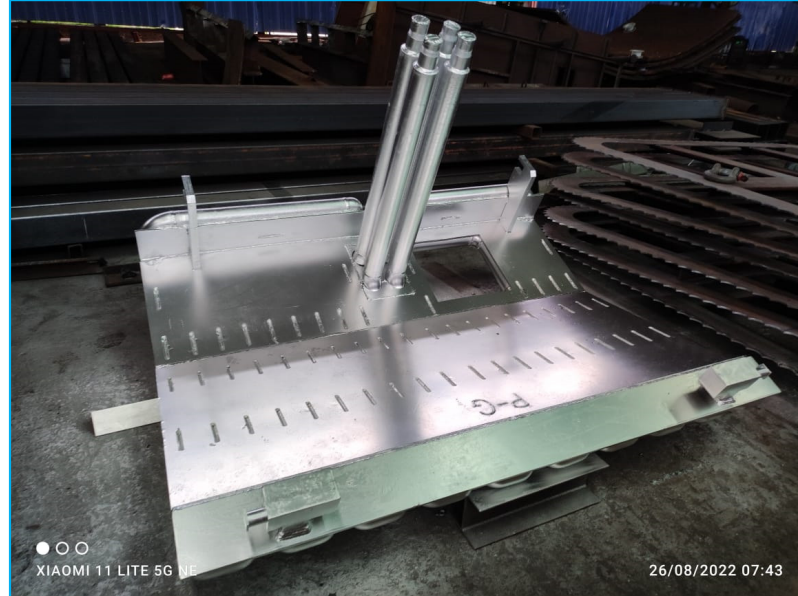
Project References:-

- Complete Shaft Furnace Panels Replacement



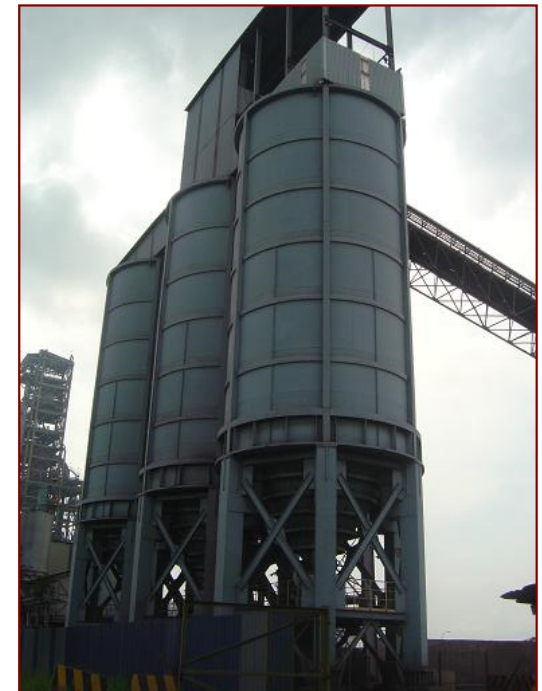
Project References:-

- **Complete Shaft Furnace Panels Replacement**



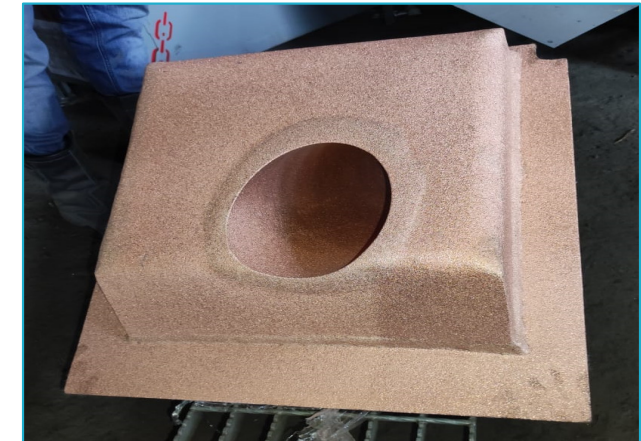
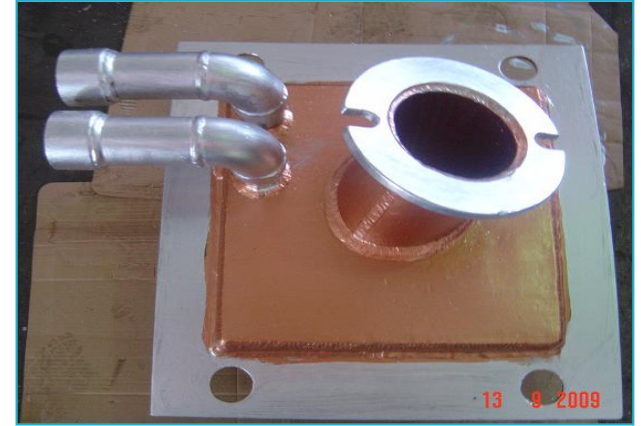
Project References:–

- **Dust Collector System – bag house, trombone cooler, ducting**
- **Ladle Transfer Car**
- **Ladle**
- **Silos**



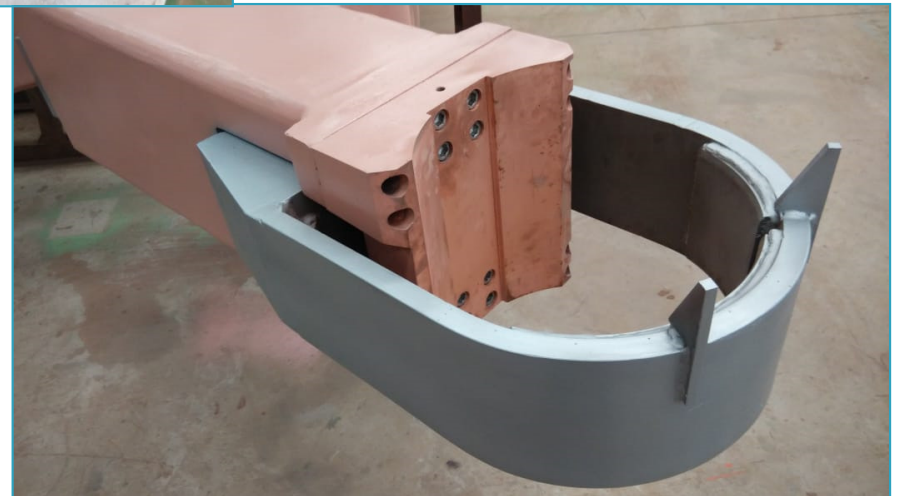
Project References:-

- Copper Cooling Panel
- Copper Injector Box
- Oxygen Lance



Project References:-

- Copper contact pad for EAF and LF electrode arm



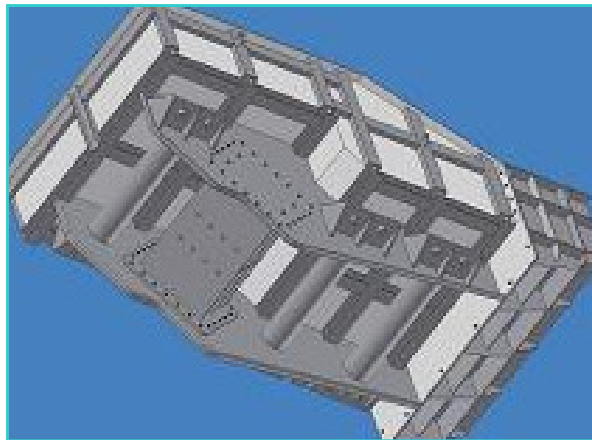
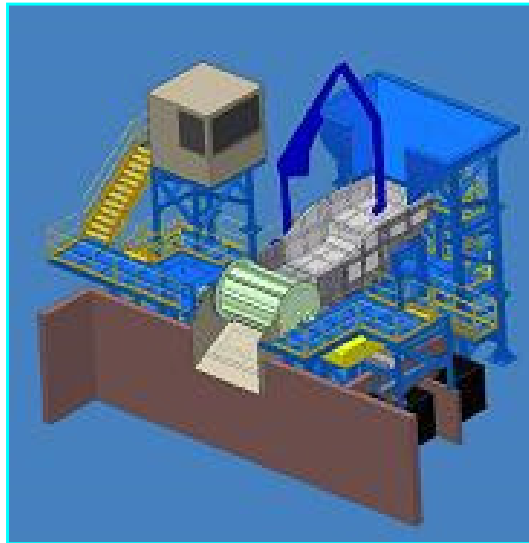
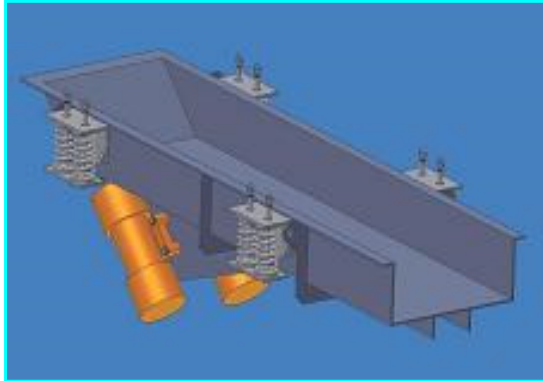
Project References:-

- Soaking Furnace Upgrading Project



Project References:-

- **Scrap Cleaning Machine**



Project References:–

- Raw Material Yard Stacker Reclaimer



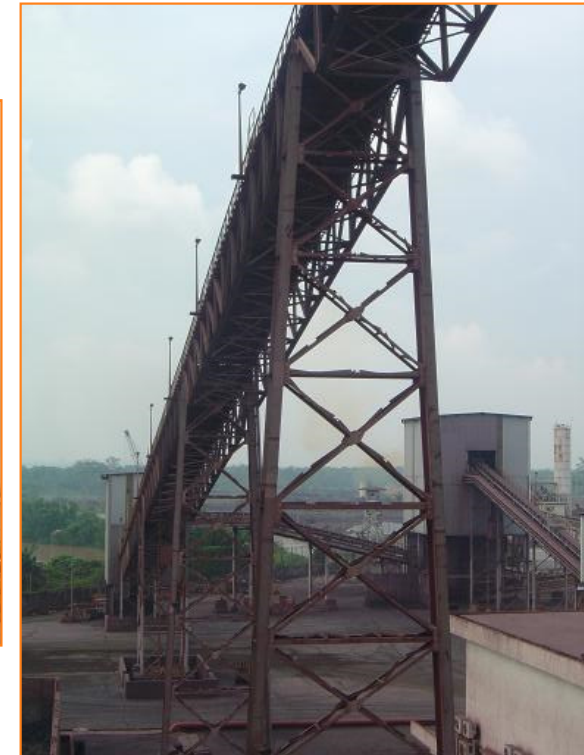
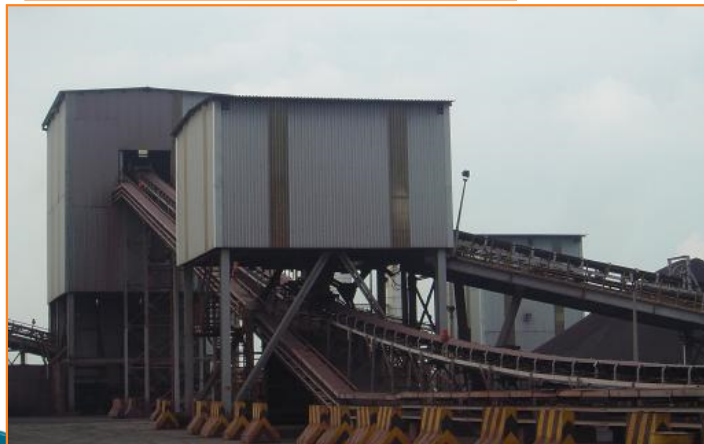
Project References:-

- **Raw Material Yard Blending Reclaimer & Blending Stacker**



Project References:-

- **Raw Material Yard Conveyor System & Transfer Station**



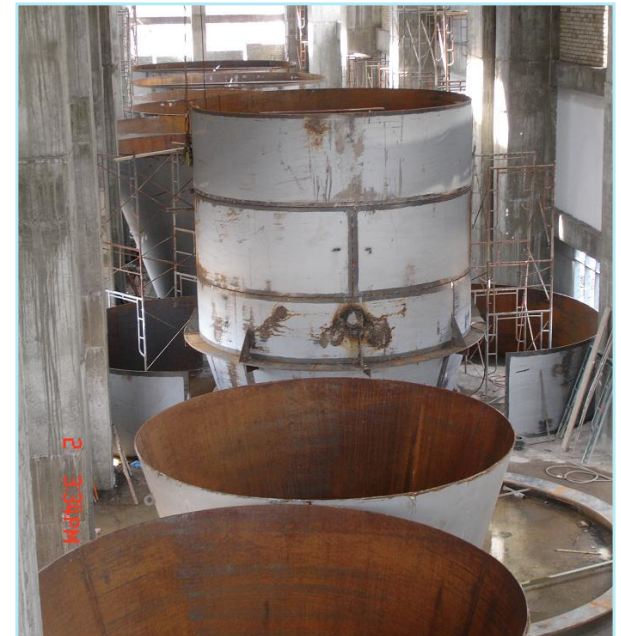
Project References:-

- Raw Material Yard (Value Engineering)



Project References:-

- Raw Material Yard (Value Engineering)



Project References:-

- **Direct Reduction Iron Plant**



Project References:-

- Lime Kiln



Project References:-

- Hydration Plant



Project References:-

- Piping works



Project References:-

- **Natural Gas Pipeline**



Project References:–

- Piping Works ~ Rolling Mill BGV Upgrading



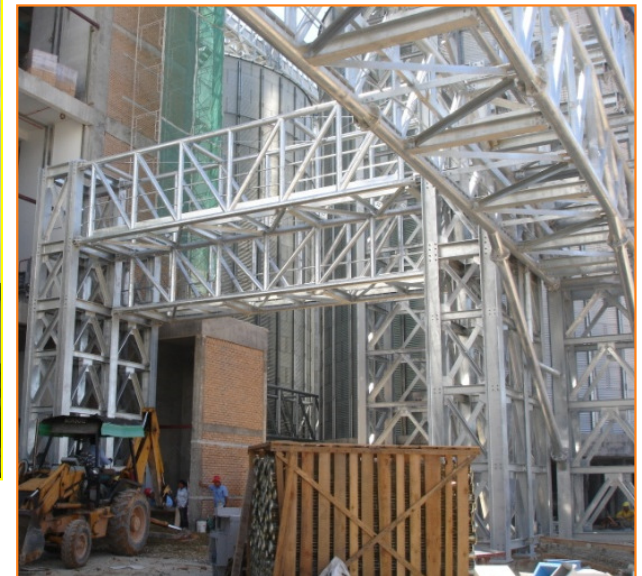
Project References:-

- **Slag Processing Plant**
~ **Equipment/Machinery Installation**



Project References:–

- **Overhead Conveyor Gantry Structural Steel Works**



Project References:-

- Main Process Building, Pipe Rack, Warehouse



Project References:-

- **Structural Steel Works – M Project @ Kemaman, Terengganu**



Project References:-

- **Super-Structural Steel Works**



Project References:-

- **Super-Structural Steel Works**



Project References:-

- Gate House, Fire Truck Station, Covered Walkway & Carpark



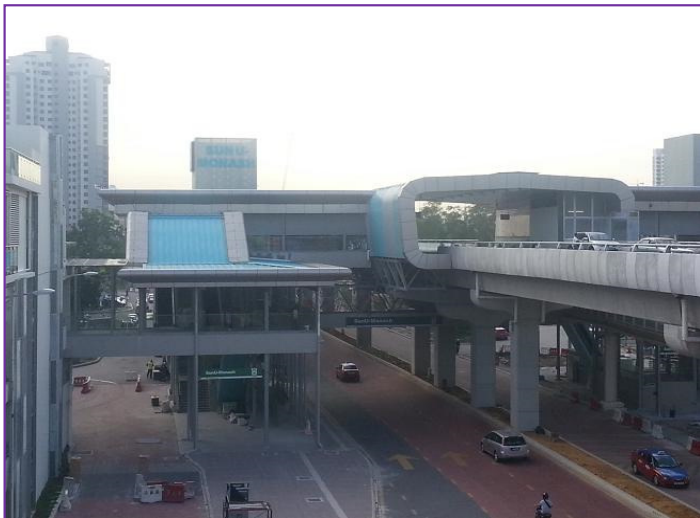
Project References:-

- **Sunway Pinnacle Link Bridge**



Project References:–

- **Sunway Bus Rapid Transit–Steel Structural for Station**



Project References:–

- **Sunway SP3 – Link Bridge**



Project References:–

- **Sunway SP3 – Pyramid Roof**



00m3
Tank E
200m3
Tank D

Project References:–

- **Sunway SP3 – Pyramid Roof**



Project References:–

- **KVMRT PACKAGE S3 – Fabrication & Installation of Roof Truss**



Project References:-

- **KVMRT PACKAGE S3 – Fabrication & Installation of Link Bridge**



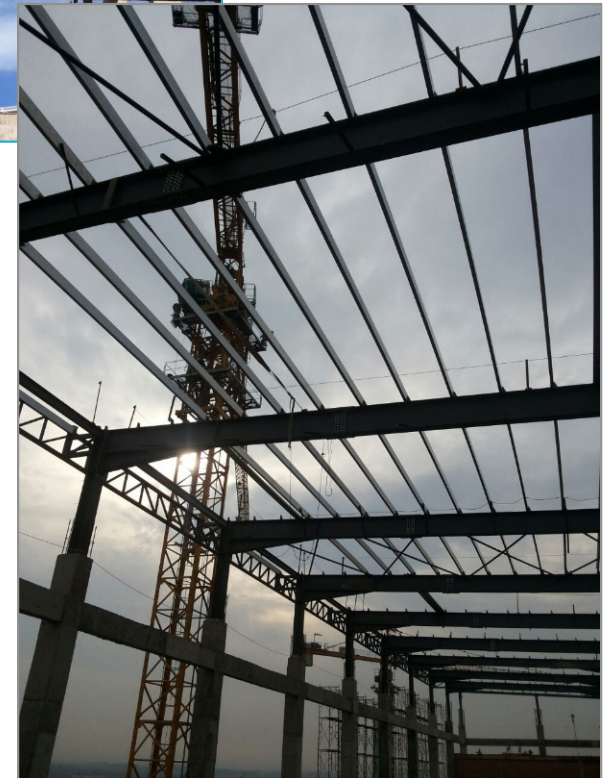
Project References:–

- **KVMRT PACKAGE S3 – Fabrication & Installation of OU Link Bridge**



Project References:–

- **Paradigm Mall JB – Roof Structures, Cinema Seating, Glass Lift**



Project References:–

- **Paradigm Mall JB – Roof Structures, Cinema Seating, Glass Lift**



Project References:-

- **Paradigm Mall JB – Roof Structures, Cinema Seating, Glass Lift**



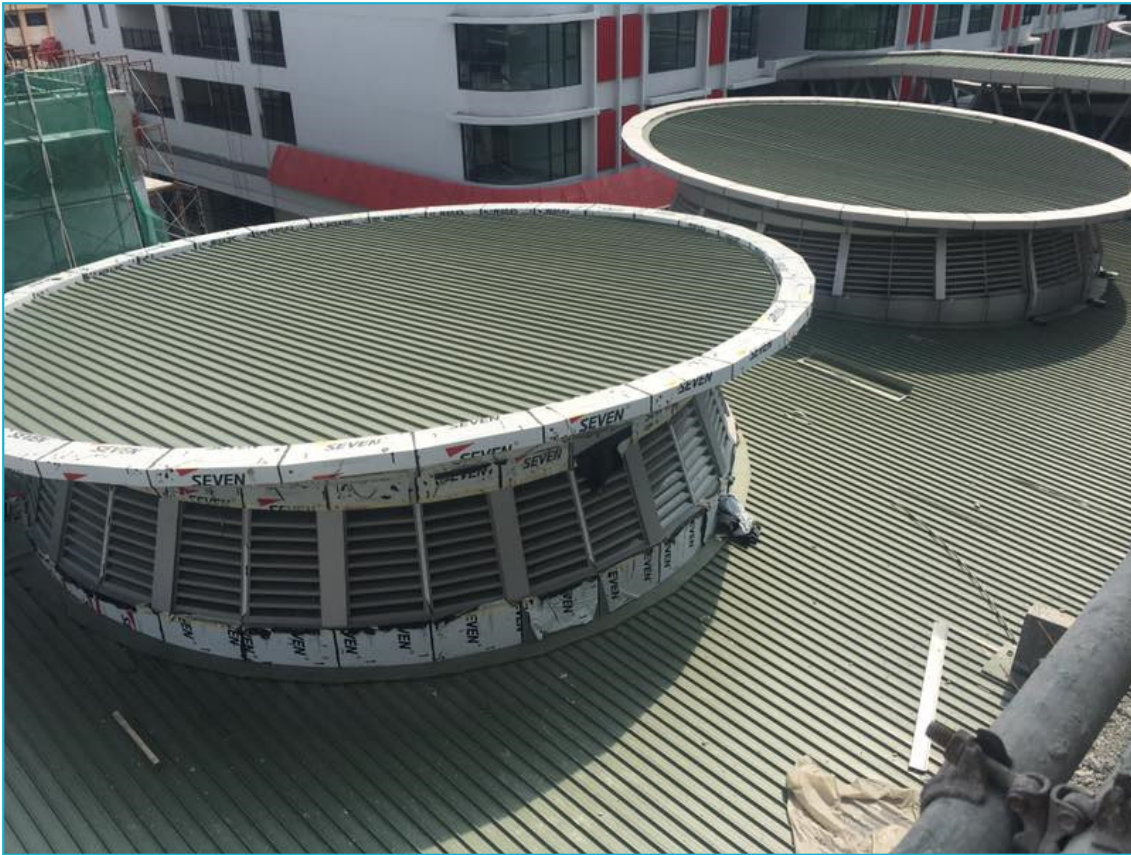
Project References:-

- **Sunway CP3 Roof Structure, Link Bridge**



Project References:-

- **Sunway CP3 Roof Structure, Link Bridge**



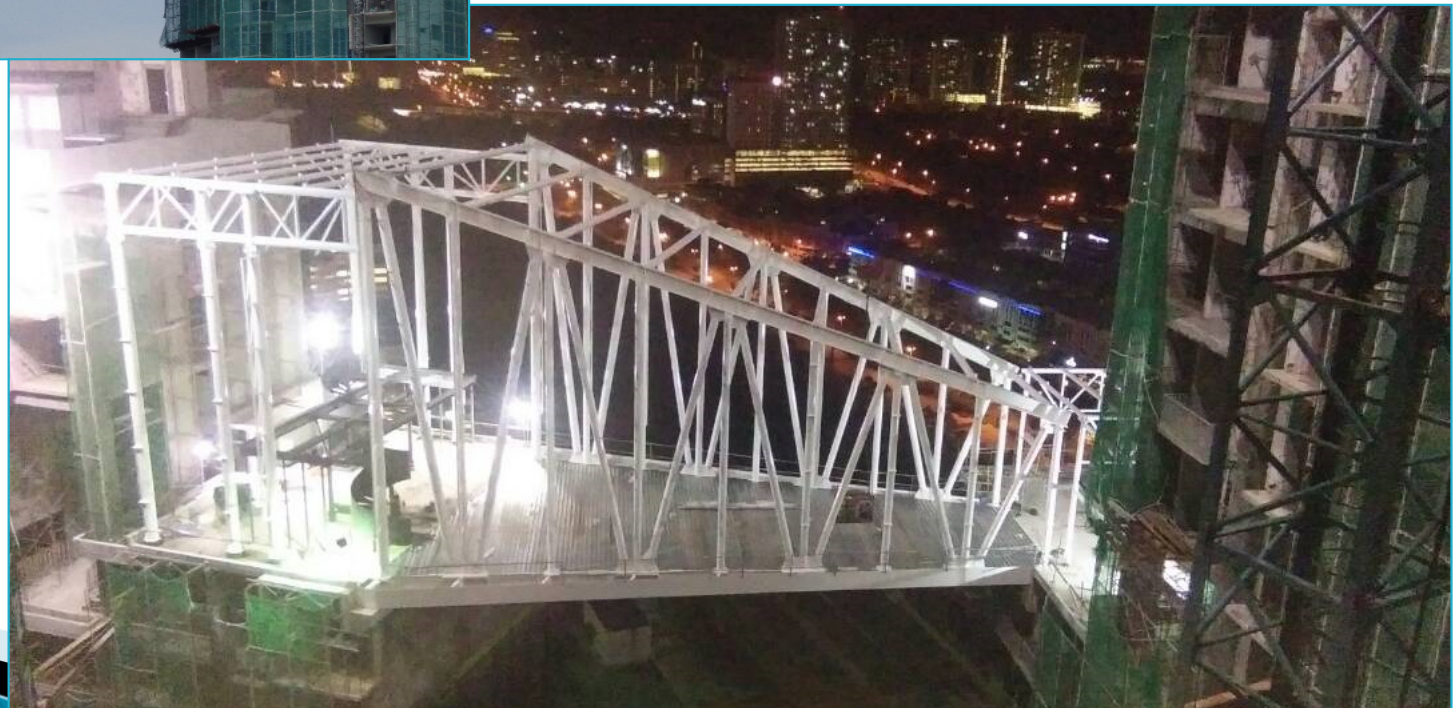
Project References:-

- **Sunway CP3 Roof Structure, Link Bridge**



Project References:-

- **3rd Avenue - Skybridge**



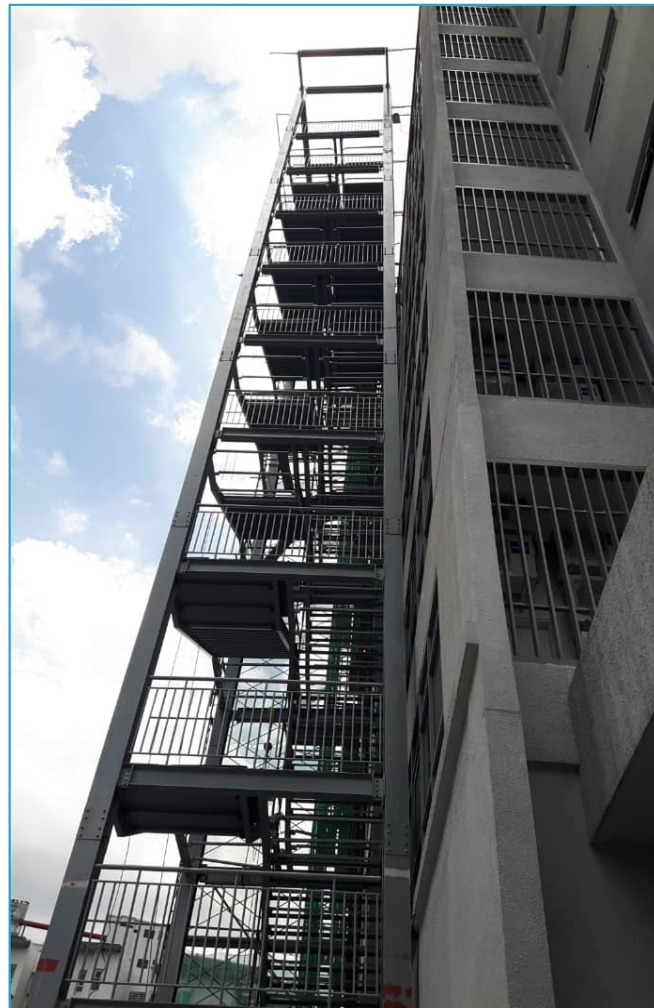
Project References:-

- **Light Rail Transit (LRT3) - Depot**



Project References:–

- **Sunway Velo College Structural Steel Staircase**



Project References:-

- **Sunway Velo College Structural Steel Staircase**



Project References:-

- **Light Rail Transit (LRT3) - Depot**



Project References:–

- **Parcel F Putrajaya – Pedestrian Link Bridge, Steel Structure Roof**



Project References:–

- **Parcel F Putrajaya – Pedestrian Link Bridge, Steel Structure Roof**



Project References:–

- **Setia Precast– IPKB Pedestrian Bridge**



Project References:-

- **Conference Centre & Hotel – roof structure**



Project References:–

- **Conference Centre & Hotel – roof structure**



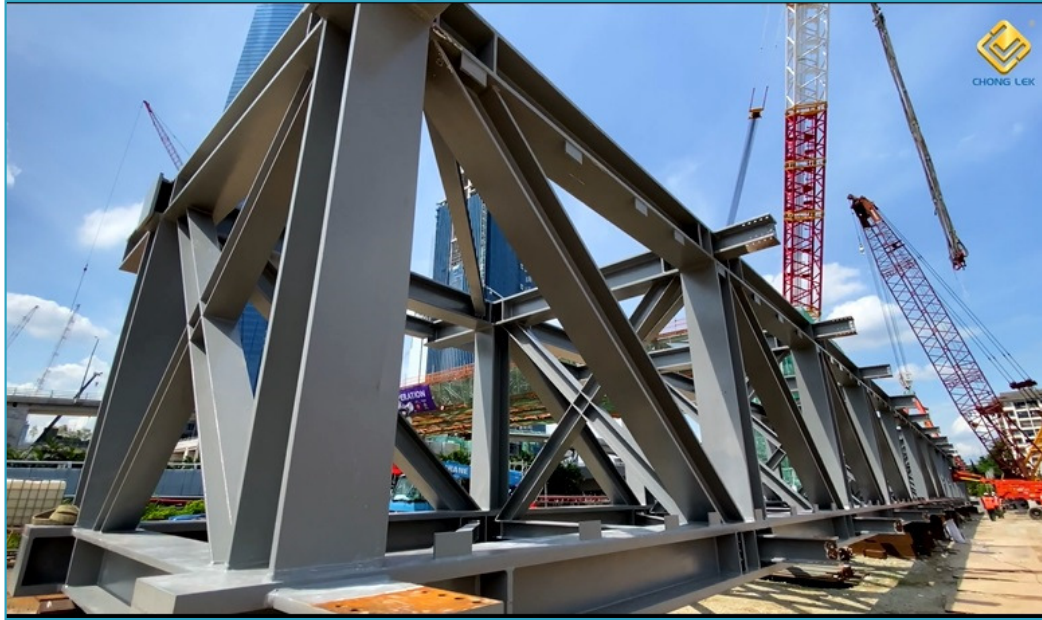
Project References:-

- TRX C9 Bridge - Steel Structural Works



Project References:-

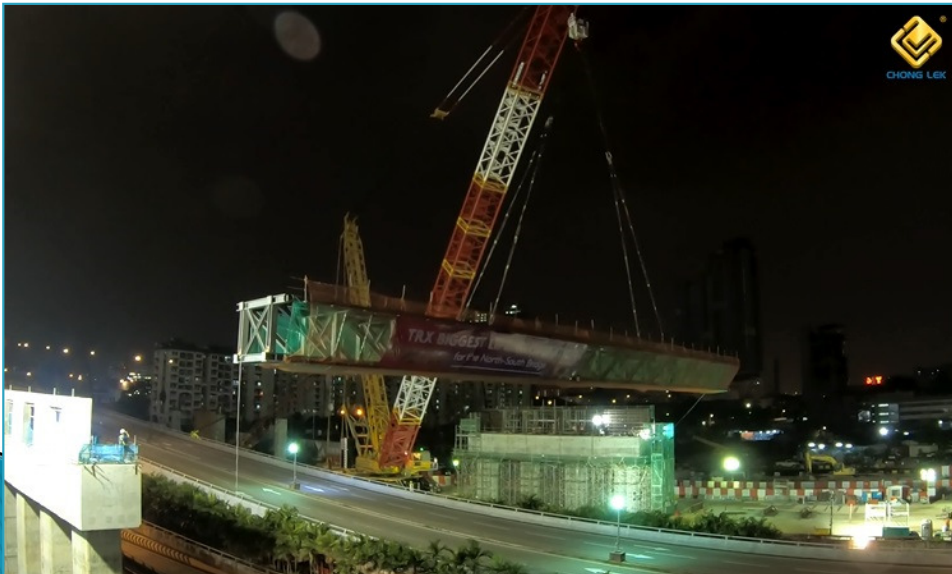
- TRX C9 Bridge - Steel Structural Works



Torque Shear Bolts

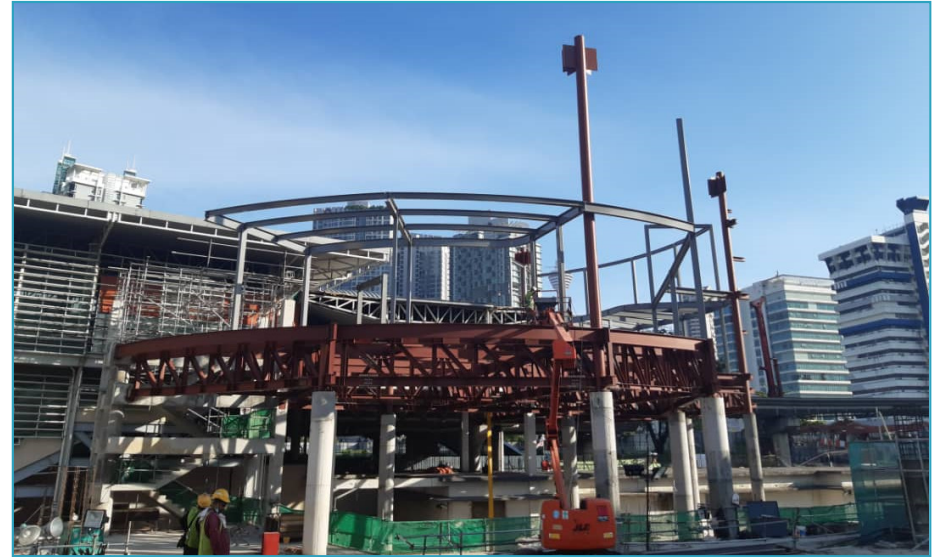
Project References:-

- TRX C9 Bridge - Steel Structural Works



Project References:-

- **Hang Tuah Monorail**



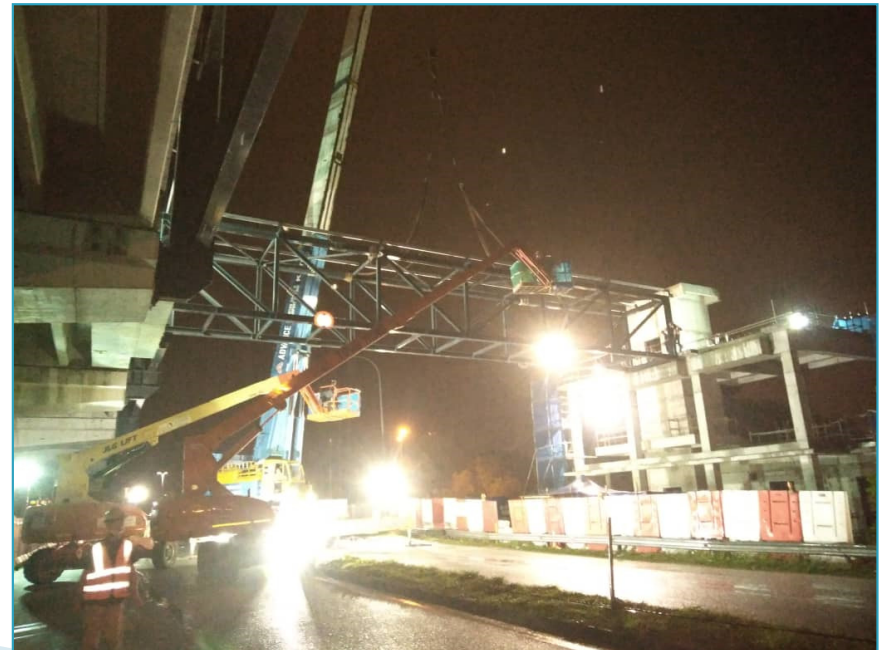
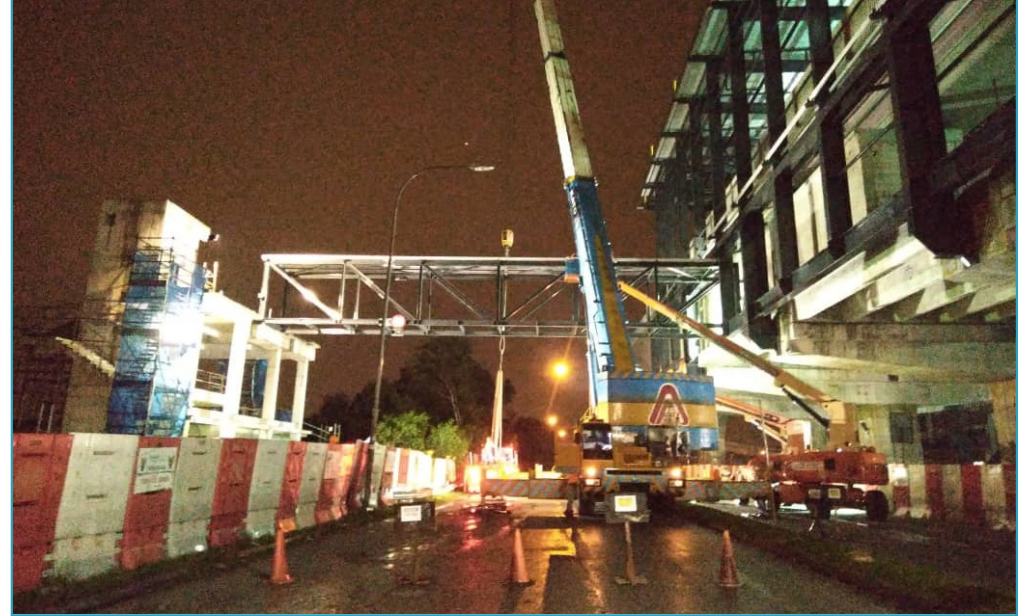
Project References:-

- **MRT S208 Elevated Station Roof Steel Structure & Link bridge**



Project References:-

- **MRT S208 Elevated Station Roof Steel Structure & Link bridge**



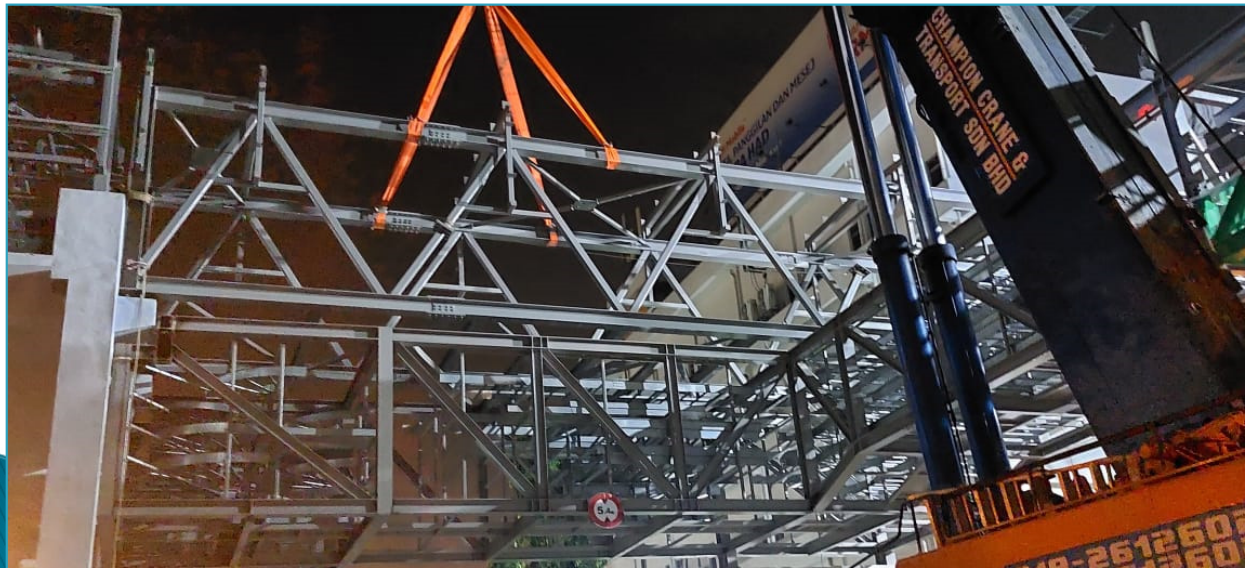
Project References:-

- **LRT3 Station18 & 22 - Main Station, Access and Link Bridge**



Project References:-

- LRT3 Station18 & 22 - Main Station, Access and Link Bridge



Project References:-

- LRT3 Station18 & 22 - Main Station, Access and Link Bridge



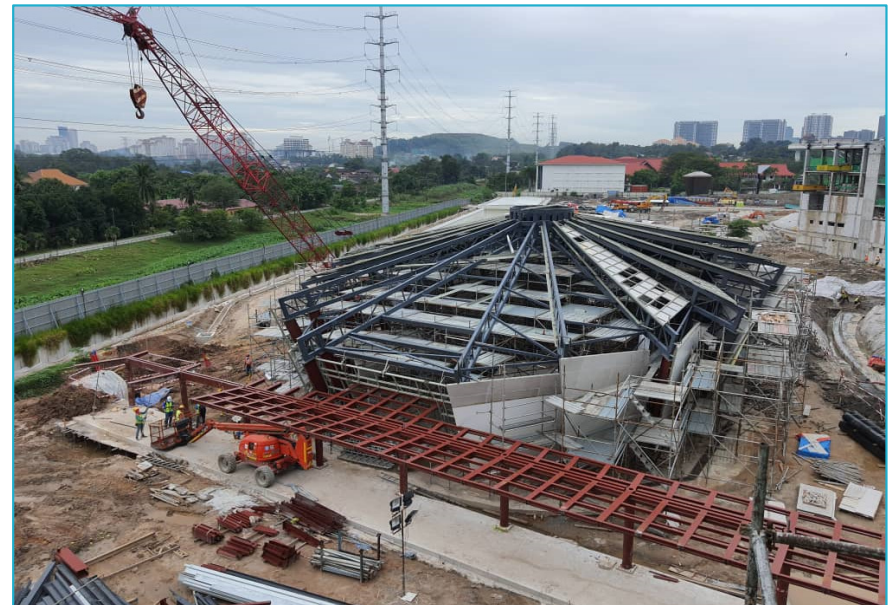
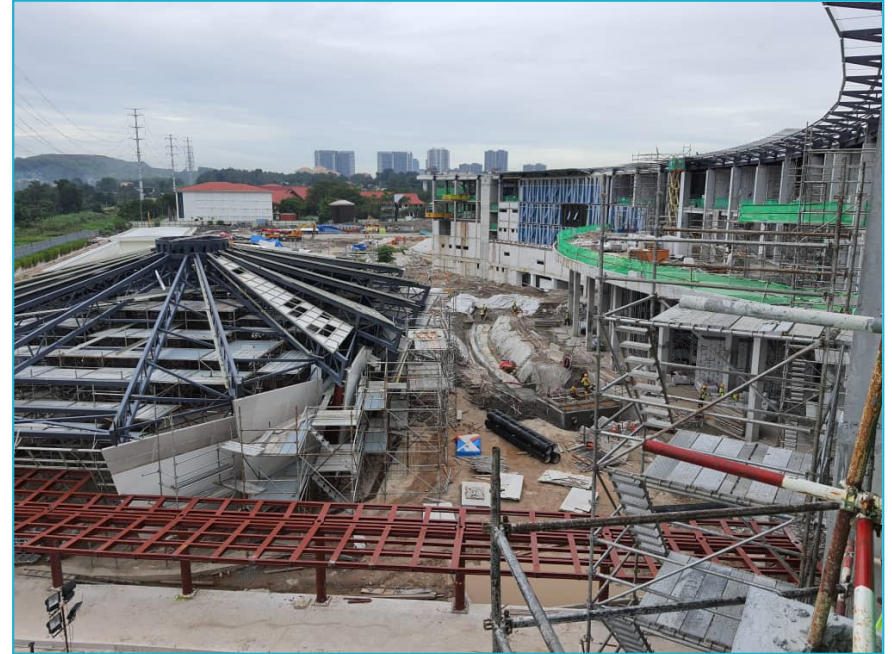
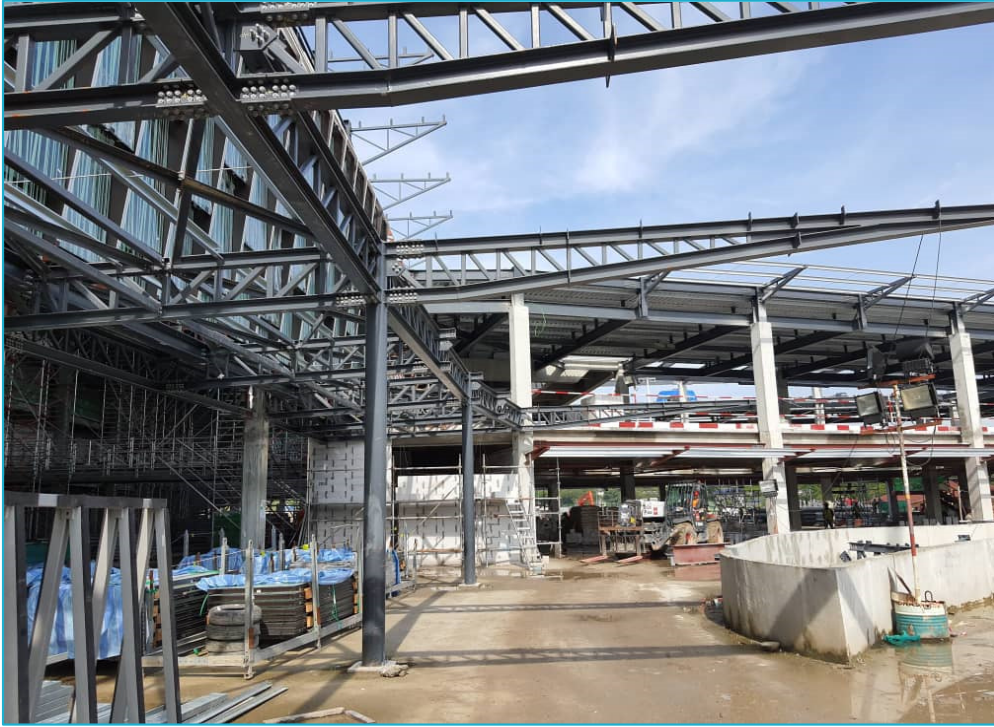
Project References:-

- **Petronas Leadership Centre ~ Structural Steel Works**



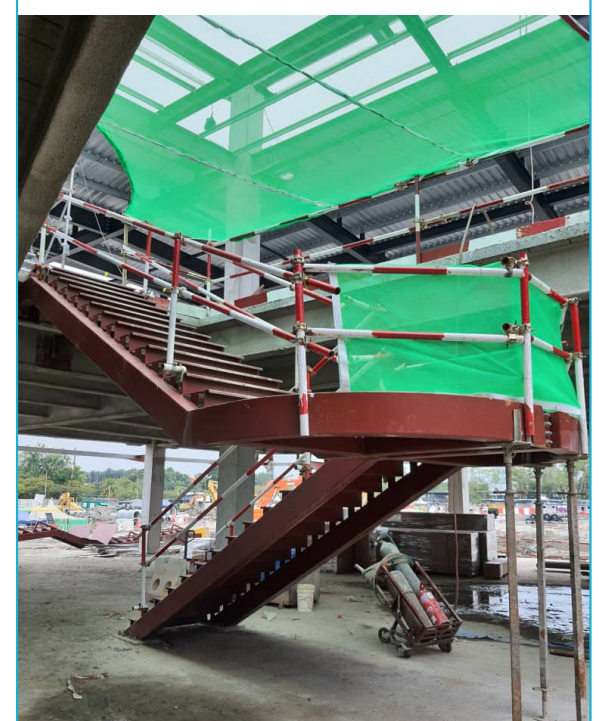
Project References:–

- **Petronas Leadership Centre ~ Structural Steel Works**



Project References:-

- **Petronas Leadership Centre ~ Structural Steel Works**



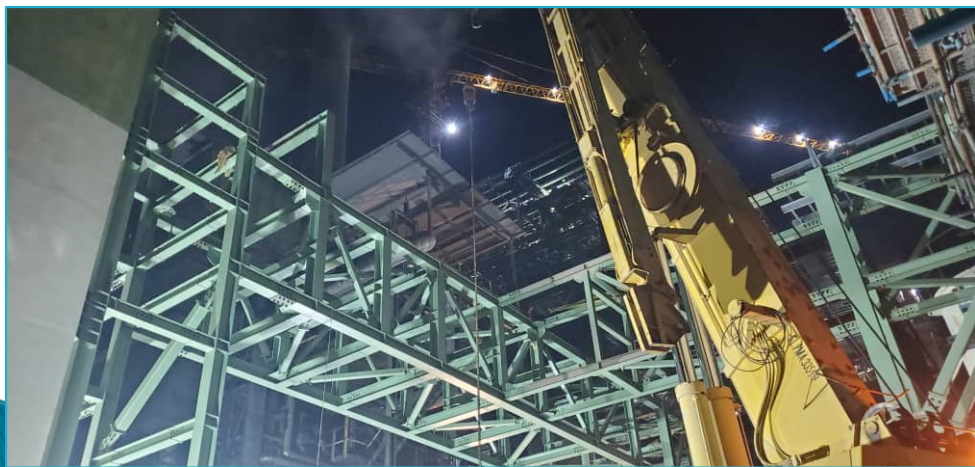
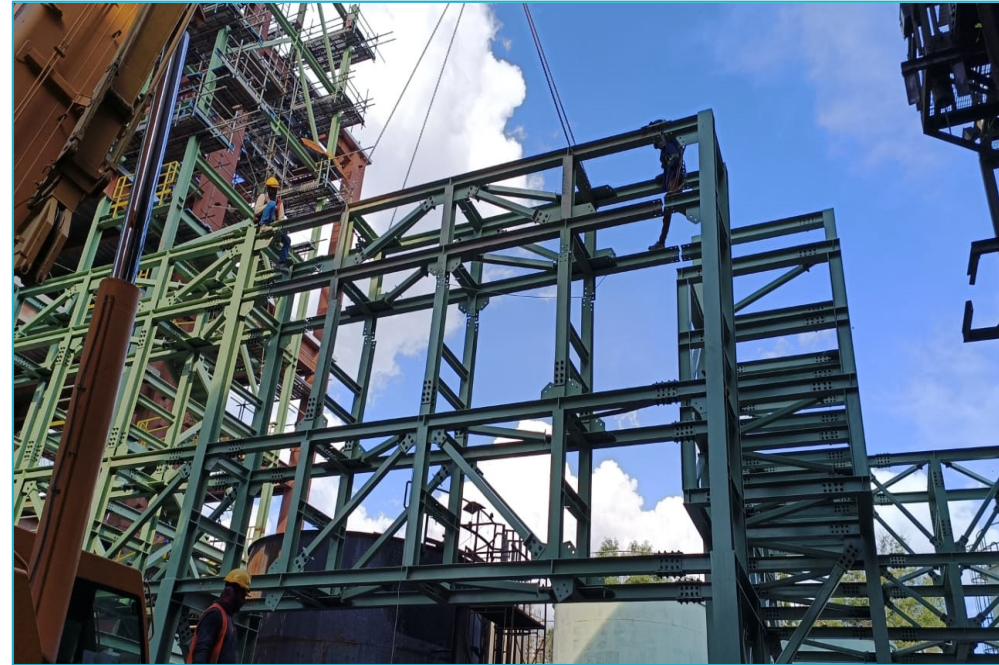
Project References:-

- **Petronas Leadership Centre ~ Structural Steel Works**



Project References:-

- **Plant Extension, Steel Structure Works @ Mentakab Pahang**



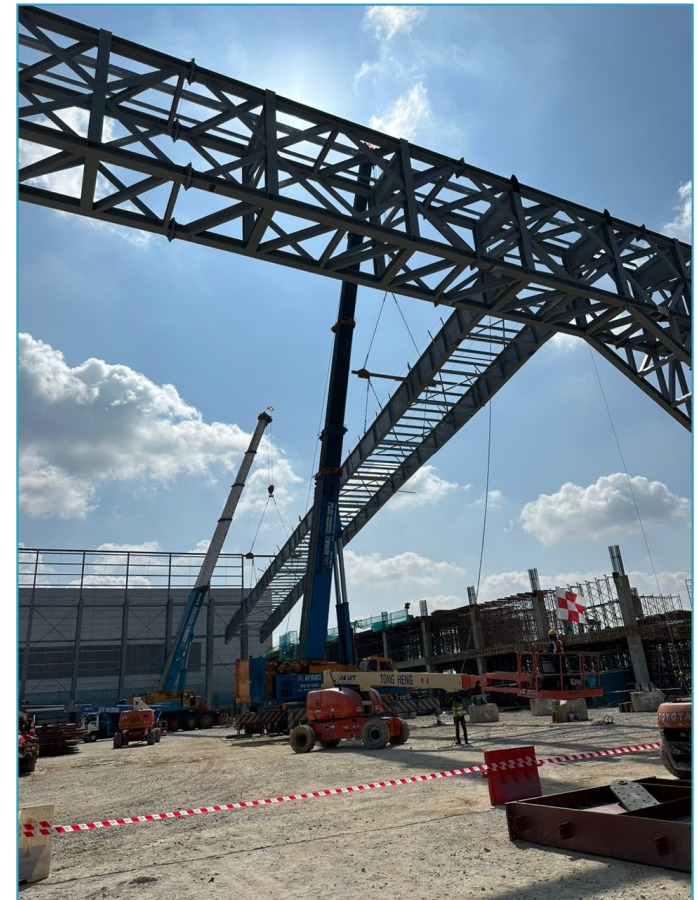
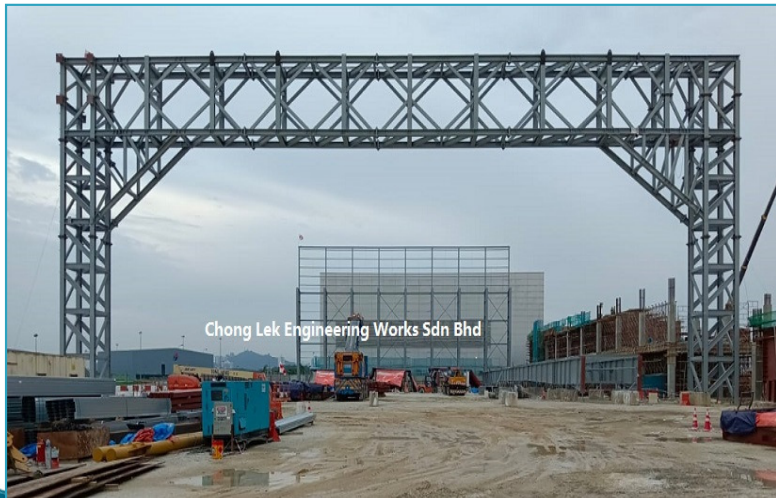
Project References:-

- **Plant Extension, Steel Structure Works @ Mentakab Pahang**



Project References:-

- Execujet Hangar (Subang Airport)



Project References:–

- **Projek Rapid Transit System Link (RTS LINK)**
Antara Johor Bahru dan Singapura
~ Depot & Power Supply System - Steel Structure



Project References:-

- **Projek Rapid Transit System Link (RTS LINK)**
Antara Johor Bahru dan Singapura
~ Depot & Power Supply System - Steel Structure



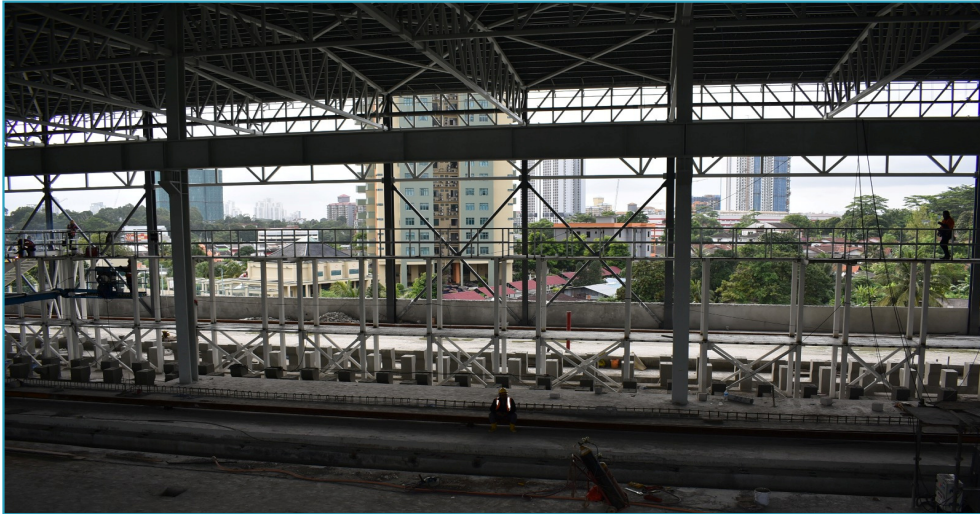
Project References:-

- **Projek Rapid Transit System Link (RTS LINK)**
Antara Johor Bahru dan Singapura
~ Depot & Power Supply System - Steel Structure



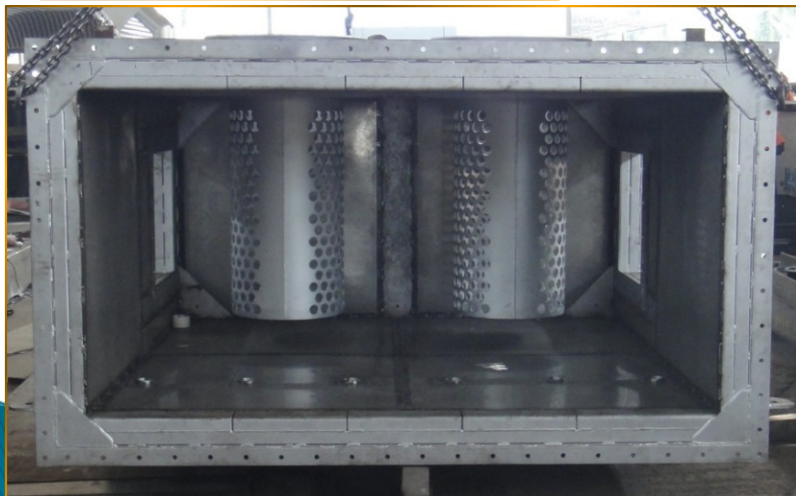
Project References:-

- **Projek Rapid Transit System Link (RTS LINK)**
Antara Johor Bahru dan Singapura
~ Depot & Power Supply System - Steel Structure



Project References:-

- **Gas Turbine Silencer**
(Kawasaki Heavy Industry, Ltd)



Project References:-

- Crane Girder



Project References:-

- **MRT – PIER HEAD CASTING MOULD**



Project References:-

- **Waste Gas & Lime Dust Filter System (Design & Build)**



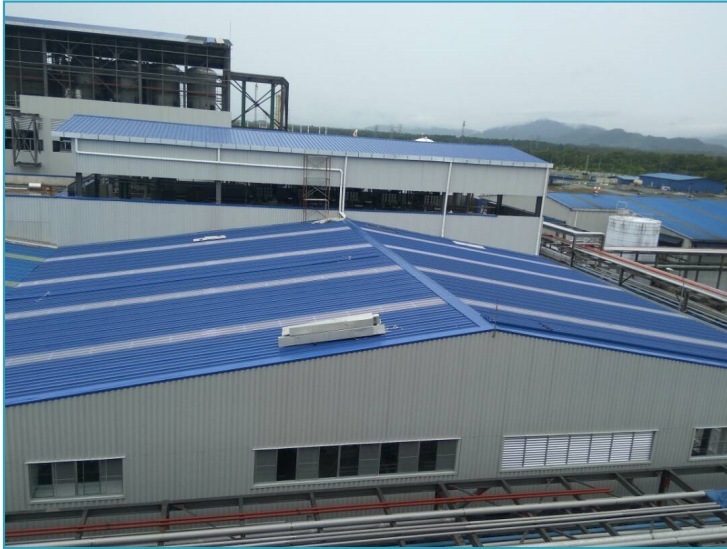
Project References:-

- Roofing & Cladding



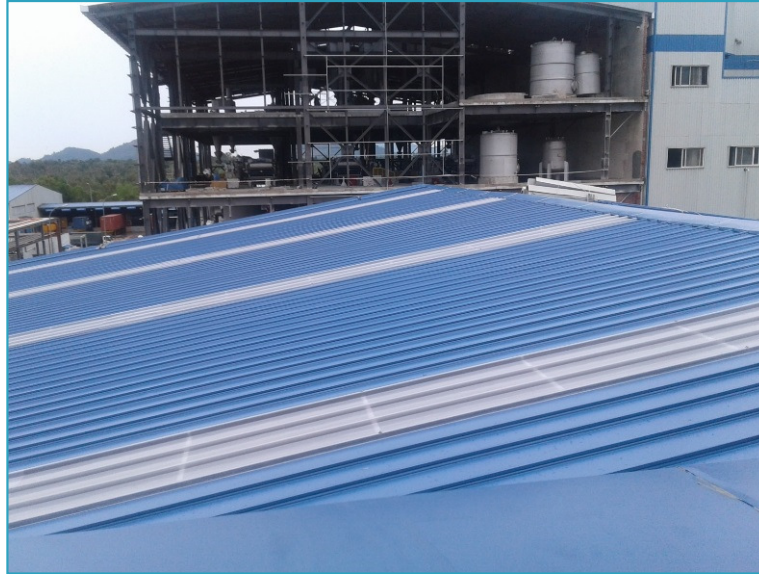
Project References:–

- Roofing & Cladding



Project References:-

- Roofing & Cladding



Project References:-

- **Roofing & Cladding**



Project References:-

- **Roofing & Cladding**



Project References:-

- Roofing & Cladding



Project References:-

- **Roofing & Cladding**



Project References:-

- **Roofing & Cladding – Conference Centre & Hotel**



Project References:-

- Civil Works (Stone Column)



Project References:-

- **Industrial Mechanical Parts Supplies**

- ❖ **Hydraulic and Lubrication Oil Filter Elements**



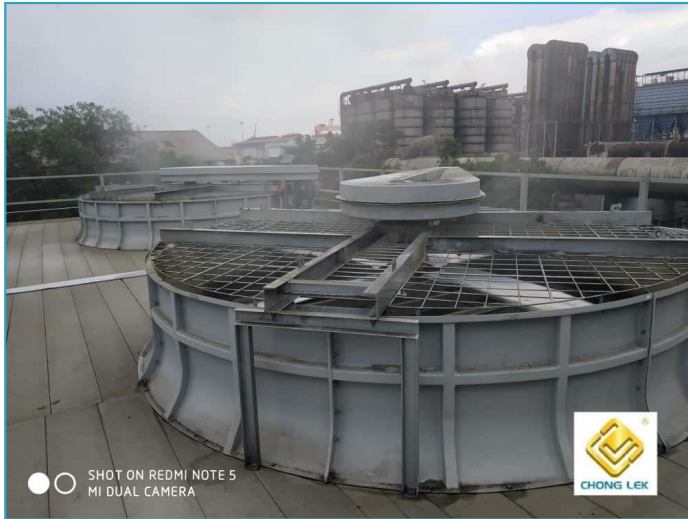
Project References:-

- **Industrial Mechanical Parts Supplies**
 - ❖ Filter Bags for Fume Extraction Baghouse System



Project References:-

- **Industrial Mechanical Parts Supplies**
 - ❖ Cooling Tower for Water Cooling System



Project References:-

- **Industrial Mechanical Parts Supplies**

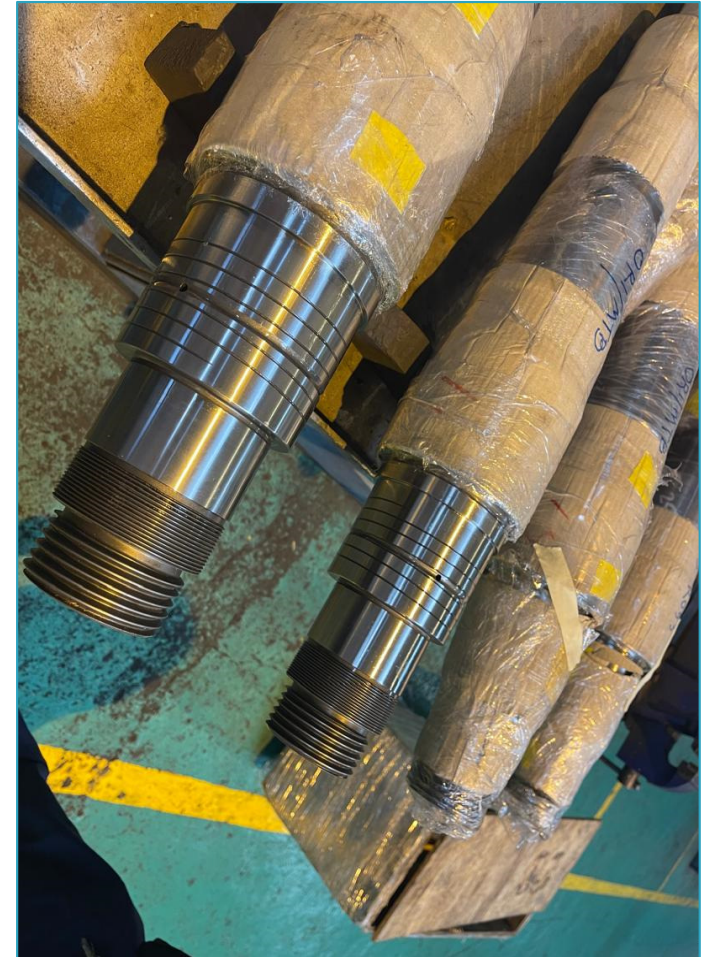
- ❖ **Rolling Mill's Fast Block Roll Shafts Repairing**



Project References:–

- **Industrial Mechanical Parts Supplies**

- ❖ Pinion Shaft
- ❖ Coupling Hub



Project References:-

- **Industrial Mechanical Parts Supplies**

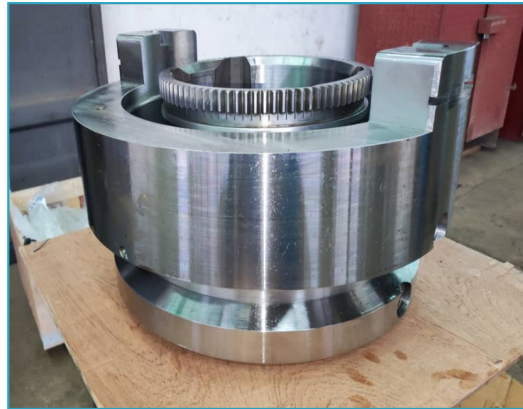
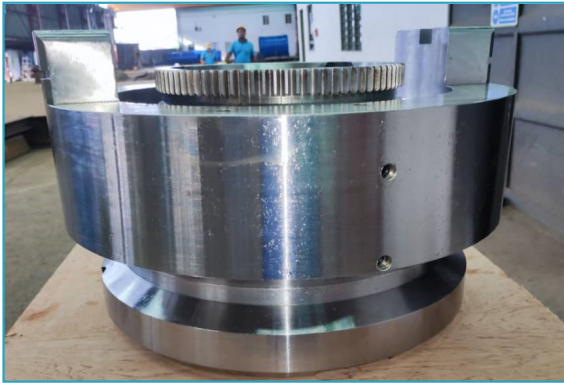
- ❖ **Rolling Mill Stand Locking Ring Body Modification**



Project References:-

- **Industrial Mechanical Parts Supplies**

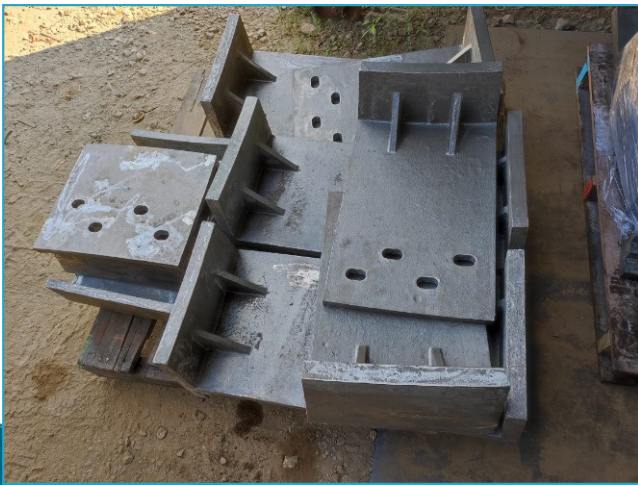
- ❖ **Rolling Mill Locking Ring Body Complete Set**



Project References:-

- **Industrial Mechanical Parts Supplies**

- ❖ **Casting of Mechanical Parts**



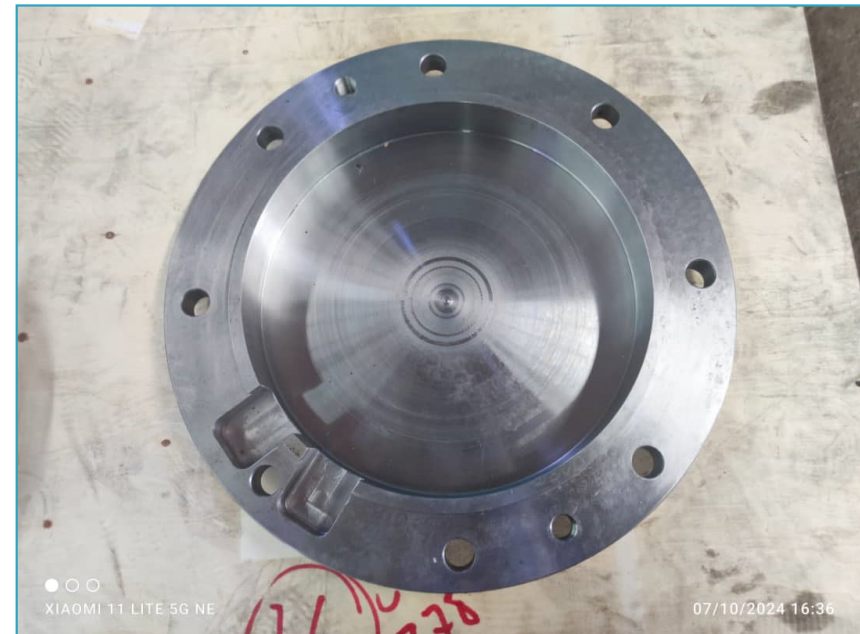
Project References:-

- **Industrial Mechanical Parts Supplies**
- ❖ Gear Unit for Wire Rod Block Primary Gearbox



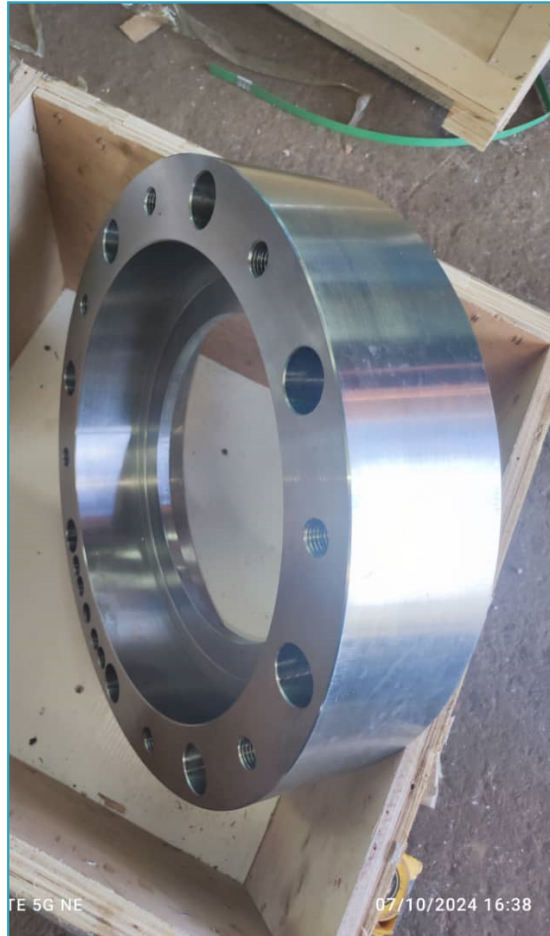
Project References:-

- **Industrial Mechanical Parts Supplies**
 - ❖ Flange for Wire Rod Block Primary Gearbox



Project References:-

- **Industrial Mechanical Parts Supplies**
 - ❖ Bush for Wire Rod Block Primary Gearbox



Project References:-

- **Industrial Mechanical Parts Supplies**

- ❖ Screw for ESS Locking Ring Units



- ❖ Flange for BGV200



Project References:-

- **Industrial Mechanical Parts Supplies**

- ❖ **Ring in Two Halves**



Project References:-

- **Industrial Mechanical Parts Supplies**
- ❖ **Coil Compactor Wire Inlet Guide**



Project References:-

- **Industrial Mechanical Parts Supplies**

- ❖ **Coil Compactor Guide Body**



- ❖ **Coil to C-Hook Transfer Racks**



Project References:-

- **Industrial Mechanical Parts Supplies**

- ❖ Tail EVAC Hydraulic Cylinders



Project References:-

- **Industrial Mechanical Parts Supplies**
 - ❖ Thermal Shaft C/W Paddles for Lime Plant



Project References:-

- **Industrial Mechanical Parts Supplies**
- ❖ Pressure Vacuum Relief Valve



Project References:–

- **Material Handling & Labour Supply Business**

WASTE HANDLING

- EAF Hot Slag Handling
- Skull Handling
- Pit Skull Cutting
- LF Slag Disposal
- Waste & Dust Handling



Project References:–

- **Material Handling Business**

MATERIAL HANDLING

- Scrap Handling
- Scrap Sorting
- Scrap Cutting



Project References:–

- **Material Handling Business**

MATERIAL HANDLING

- Scrap Cleaning & Clearing
- Finished Goods Handling
- Internal Transfer



Project References:–

- **Material Handling Business**
IRON ORE HANDLING
 - Staking & Transfer



Our Products & Services :-

- Cleaning of hot / cold slag and loading onto dump truck at EAFs & LF.
- Handle and transfer slag for land filling c/w leveling at open yard



Our Products & Services :-

- Handle and transfer mill scale and furnace's dust to designated area
- Cleaning, loading & transferring tundish block and ladle skull at LFs and Caster



Our Products & Services :-

- Skull (tundish block, LF skull) cutting at open yard



Our Products & Services :-

- Scrap handling which unloading from barge/trucks/container to stacking & deliver to bay
- Sorting of un-wanted material & oversized scrap



Our Products & Services :-

- Clearing of scrap & disposal of debris/waste



Our Products & Services :-

- Finished goods (billets) internal transfer including stacking & labeling / marking
- Loading of finished goods (billets & wire rod) onto trailer or wagon for sales



Our Products & Services :-

- Raw material internal transfer



Our Products & Services :-

- Raw material internal transfer



Our Products & Services :-

- Sands Handling



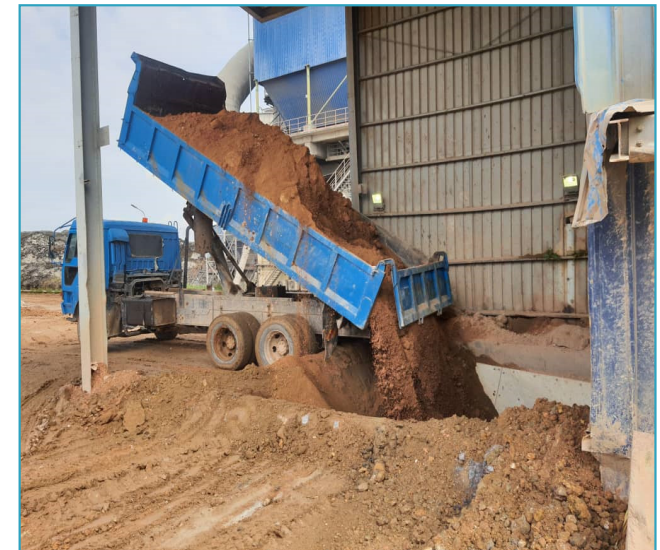
Our Products & Services :-

- Mining Handling



Our Products & Services :-

■ Cement Plant



Our Products & Services :-

- Cement Plant – Coal Plant



Our Products & Services :-

■ Quarry Plant Operation



Equipment List

No.	Equipment Name	Units
1	Bull Dozer * Komatsu D60S-6 * Komatsu D75S * Caterpillar 963B * Caterpillar 966C * Caterpillar 950	39
2	Excavator * Komatsu PC 300 * Komatsu PC 400 * Hitachi EX 200 * Hitachi EX 300 * Samsung 350	32
3	Dump Truck * Nissan RD8 * Fuso 8DC9 * Hino EK 100 * Isuzu 10PC1	71

No.	Equipment Name	Units
4	Back Hoe * Case 580K II	3
5	Low Loader * Volvo FL-7	4
6	Forklift * Toyota 7 Ton * Toyota 6 Ton * Toyota 4.5 Ton	10
7	Trailer - Prime Mover & Double Axle	20
8	Mobile Crane * 35 Ton * 20 Ton	2

Volume

- 180,000 ~ 200,000 MT waste per month
- 80,000 ~ 100,000 MT billet per month
- 60,000 ~ 80,000 MT wire rod / bar per month
- 90,000 ~ 130,000 MT scrap per month
- 130,000 ~ 150,000 MT raw material transfer per month
- 90,000 ~ 120,000 MT finished product per month

- 100 competent/experienced workers inclusive of :–
 - (a) Site :–
 - site supervisor
 - scrap cutter
 - in-plant cutter

 - (b) Workshop crew :–

<ul style="list-style-type: none">– technician– mechanical– foremen– tyremen	<ul style="list-style-type: none">– wiremen– storekeeper– housekeeper– general worker
-----------------------------------------------------------------------------------------------------------------------	--------------------------------------------------------------------------------------------------------------------------------


Customer Base

- ❖ Megasteel Sdn Bhd
 - 2 units of EAFs @ 160 tons each
 - 2 units of LFs @ 160 tons each
 - CSP line @ 3.2 million tpy

- ❖ Amsteel Mill Sdn Bhd
 - 1 unit of EAF @ 160 tons
 - 1 unit of LF @ 160 tons
 - Wire rod / bar mill @ 1.6 million tpy

- ❖ Ann Joo Steel Berhad
 - 1 unit EAF @ 90 tons
 - 1 unit LF @ 90 tons
 - Rolling mill 1 @ 144,000 tpy
 - Rolling mill 2 @ 240,000 tpy

Customer Base

- ❖ Kualiti Alam Sdn Bhd
 - Soli Department
 - Landfill Department
 - INC Department
 - Logistic Department
 - ❖ NatSteel Holdings Pte.Ltd
 - 1 unit of EAF @ 80 tons
 - Wire rod / bar mill
 - ❖ Eastern Steel Sdn Bhd
 - RMY Department
 - Material Handling
 - ❖ Hume Cement
 - Material Handling
 - Hiring of Equipment
 - ❖ Tasek Corporation Sdn Bhd
 - Desingned to do produce 2.3 million tonnes of clinker per year efficiently
 - ❖ Compact Energy Sdn Bhd
 - A subsidiary company of Lion Group
- 

– End –
Thank You

